

Classic New Zealand Tour

Experience the best of New Zealand on this comprehensive 21-day tour, showcasing the vibrant cities and breathtaking landscapes of both the North and South Islands. In the North Island, immerse yourself in the rich Maori culture of Rotorua, marvel at the volcanic wonders of Tongariro National Park, a UNESCO World Heritage site, and visit the bustling hubs of Auckland and Wellington. Cross the picturesque Cook Strait aboard the Interislander Ferry to begin your South Island adventure, where a circuit of stunning scenery awaits. Highlights include the wildlife haven of Kaikoura, the majestic peaks of Mt Cook National Park, the icy splendour of the West Coast glaciers, and an unforgettable cruise through the pristine beauty of Milford Sound.

Starts in: Auckland
Finishes in: Christchurch
Length: 21days / 20nights
Accommodation: Hotel 3 star
Can be customised: Yes

This itinerary can be customised to suit you perfectly. We can add more days, remove days, change accommodations, mix it up, add activities to suit your interests or simply design and create something from scratch. Call us today to get your custom New Zealand itinerary underway.



Inclusions:

Includes: Late model rental cars

Includes: Unlimited kms

Included activity: Private Transfer Auckland Airport to your Auckland Accommodation with Tourcorp

Included activity: The Visitor Promise - Cultural Learning Course

Included activity: Milford Sound Cruise with Real NZ - Lunch Included

Included activity: TranzAlpine Scenic Train: Greymouth to Christchurch

Included activity: Private Transfer from Christchurch Accommodation to Christchurch International Airport with Christchurch Touring Company

Included activity: Zealandia by Night Wildlife Sanctuary Tour

Included activity: Ocean's Cabin with Whale Watch Kaikōura

Includes: Fully inclusive rental car insurance (excess may apply)

Includes: Afterhours emergency support while touring

Included activity: Electronic Travel Guide and In-Country Support App

Included activity: Te Anau Glowworm Caves with RealNZ

Included activity: TSS Earnslaw Cruise and Walter Peak Gourmet BBQ Dinner

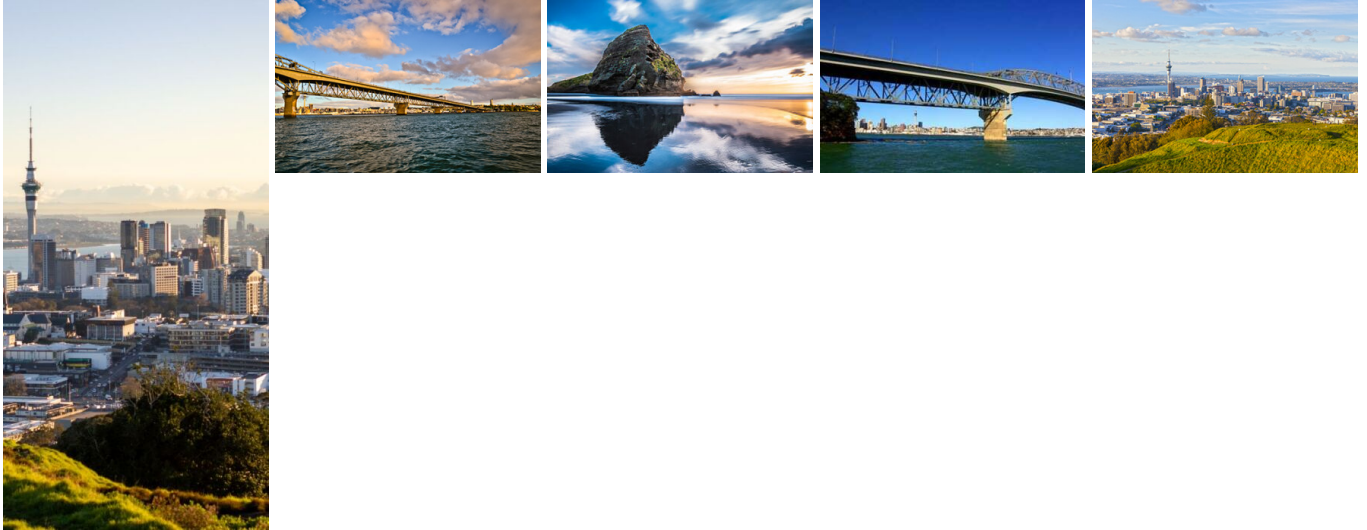
Included activity: Shared Transfer from Christchurch Train Station to Christchurch CBD Accommodation with Christchurch Touring Company

Included activity: Hobbiton Movie Set Tour from Shires Rest

Included activity: Interislander Ferry Wellington to Picton

: 20 breakfasts, 1 lunch, 1 special dinner

Day 1



Private Transfer Auckland Airport to your Auckland Accommodation with Tourcorp

You will be met at the Auckland airport by the driver and transferred to your Auckland accommodation.

Welcome to Auckland

Welcome to Auckland, known in Māori as Tāmaki Makaurau. Auckland is New Zealand's vibrant "City of Sails," and the country's largest metropolitan area. Nestled between the Pacific Ocean and the Tasman Sea. Surrounded by native bush, lush rainforests, and pristine beaches, Auckland is a haven for both adventurers and urban explorers. Wander through world-class museums and galleries in the city centre or enjoy a peaceful retreat at the Auckland Gardens, where stunning landscapes showcase New Zealand's diverse flora. Stroll along the lively waterfront to savour fresh seafood and international cuisine at Viaduct restaurants. For an unforgettable perspective, ascend the iconic SkyTower, New Zealand's tallest structure, and take in panoramic views of the city and its picturesque islands.

Your accommodation: Sudima Auckland City

Conveniently located within easy walking distance of Auckland's bustling shopping, arts, dining and entertainment precincts and opposite the New Zealand International Convention Centre.



Day 2



Collect Rental Car

This tour's from price includes an intermediate-sized vehicle, setting you up for comfortable travels. Yet, we understand every adventure is unique! Feel free to select the perfect wheels from our incredible collection of rental cars, spanning from economy hatchbacks to premium SUVs.

Explore Auckland

Perched on the edge of a large natural harbour, New Zealand's "City of Sails" offers the best of both worlds. Sandy beaches, native bush and lush rainforests give way to a vibrant urban culture. Spend time in the Viaduct Harbour, try your hand at sailing an America's Cup Yacht or take the ferry to nearby Waiheke Island for a gourmet food and wine experience. Venture to the top of Auckland's highest volcano, Mt Eden, for soaring views of the Hauraki Gulf or hop on the short ferry to Rangitoto Island and hike to the top of the volcanic island. Immerse yourself in nature at the expansive Auckland Botanic Gardens, sprawled across 156 acres of native forest, pack a picnic, soak up the sunshine, and enjoy the birdsong. Head up to the Sky Tower, standing over 300m tall, and have a meal in the 360-degree revolving restaurant. Scale the outermost perimeter of the Harbour Bridge or test your stomach with a bungee jump, then end your day on Ponsonby Road sampling upmarket culinary delights.

SUGGESTED ACTIVITY - Ferry from Auckland to Rangitoto Island and return with Fullers

A short cruise through the Waitemata Harbour to the Hauraki Gulf delivers you to Rangitoto Island. Rangitoto Island is the largest and youngest of the many volcanoes that make up the Auckland volcanic field. It erupted around 600 years ago, but is extinct now and safe to explore. During your cruise to and from the island enjoy fantastic views of Rangitoto Island and Auckland. On reaching the island you can walk to the summit (1 hour direct) for great views of the Hauraki Gulf and over Waitemata Harbour looking back towards Auckland. There are a number of walking trails to explore this volcanic island, further information can be found at the Department of Conservation website.

SUGGESTED ACTIVITY - America's Cup Sailing Experience with Explore

Participate as crew on an authentic America's Cup yacht. Take the helm, exert energy on the grinders or sit back and enjoy the action and scenery as you sail the beautiful Waitemata Harbour. Experience the excitement of sailing, no experience necessary. Feel the thrill of the wind in your face as you tack and jibe. These powerful and highly engineered race vessels are usually the domain of billionaires and elite professional yachties. Still, this unique two-hour sailing experience allows everyone to sail these Grand Prix racing machines. America's Cup is the world's oldest and most prestigious sporting trophy and ultimate yachting regatta. Experience it firsthand, sailing these remarkable vessels on the harbour that hosted the America's Cup in 2000 and 2003.

Your accommodation: Sudima Auckland City

Conveniently located within easy walking distance of Auckland's bustling shopping, arts, dining and entertainment precincts and opposite the New Zealand International Convention Centre.

Meals included: Breakfast



Day 3



Auckland to Rotorua

Your drive south from Auckland begins by crossing the Bombay Hills, which mark the boundary of the greater Auckland area, before leading you into the rich, sprawling farmland of the Waikato region. The drive takes approximately 2.5 hours non-stop, but we recommend allowing 3 hours for a relaxed journey. For a fantastic leg-stretching stop, you may consider a slight detour into Hamilton to visit the renowned Hamilton Gardens (known for its amazing themed garden collection). Alternatively, the quirky small town of Tirau, famous for its buildings shaped like a giant sheep and sheepdog, is right on your main route and makes a quick and fun photo stop. As you continue south, the scenery transitions, and telltale signs of steam and other geothermal activity will signal your arrival into the fascinating thermal and cultural hub of Rotorua.

Rotorua

Discover the geothermal, adventure, and cultural wonderland of Rotorua. As you explore, you may see steam rising from cracks in the road, bubbling and hissing water in pools along the lake's edge, and the unmistakable smell of Sulfur. Rotorua is rich in Māori culture and history, with many Māori inhabitants recognising the great potential of the volcanic land. For an outdoor adventure, head to The Redwoods and experience the rainforest treetops from high up. There are a few accessible trails for disabled hikers and great biking trails as well. If you're lucky, you might spot some of New Zealand's native birds, such as the Piwakawaka (Fantail) and the Tūī. Alternatively, enjoy the Lake Tikitapu Blue Lake Walk or explore Kuirau Park, where you'll find bubbling mud pools and steaming lakes. Don't miss the private thermal reserves such as Te Puia and Wai-O-Tapu, where you can walk among bubbling mud pools, spouting geysers, and Sulfur ponds. Just a few minutes from the town centre, the Agrodome and National Kiwi Hatchery offer an insight into nature. Rotorua's rich Māori culture is a must-see. Spend an evening with Te Pā Tū, complete with a traditional-style dinner or stroll along the lake edge to reach one of the country's oldest Māori villages at Ohinemutu. When hunger strikes, visit Eat Street in Rotorua CBD, a vibrant street lined with delicious eateries and restaurants to satisfy any craving. No visit to Rotorua would be complete without experiencing Rotorua's original tourist attraction - a relaxing spa treatment. This town boasts an array of wellness experiences to unwind in. Whether you are seeking adventure, culture, or relaxation, Rotorua offers an unforgettable experience.

Hobbiton Movie Set Tour from Shires Rest

In the heart of New Zealand, you can step into the lush pastures of the Shire with a guided tour of Hobbiton, as featured in The Lord of the Rings and The Hobbit Trilogies. Hobbiton is located just outside of Matamata in the heart of the lush Waikato farming region. Here you can visit such iconic Hobbit locations as Hobbit Holes, the Green Dragon Inn, the Mill and the Party Tree with a guide sharing behind-the-scenes tales and insight into the making of the films. Spend time wandering through Bagshot Row before being led inside a Hobbit Hole to view the detailed interior, designed to provide an authentic glimpse into the dwelling of a Hobbit.

Your accommodation: Millennium Hotel Rotorua

Millennium Hotel is Rotorua's largest 4-star deluxe hotel. Perfectly situated in the heart of the city overlooking Lake Rotorua. Five levels of accommodation offer guests a wide variety of scenic views.

Meals included: Breakfast



Day 4



Explore Rotorua

Peppered with natural hot springs, boiling mud pools and steaming geysers, Rotorua sits within one of the world's most active volcanic regions. Geothermal landmarks aside, this city of sulphur has a rich indigenous history. Home to several prominent Māori tribes, a visit to one of the Māori experiences should be high on your agenda, learn about the special meaning of pounamu-Greenstone with Mountain Jade, explore the geysers and arts of Te Puia or immerse in an evening with Te Pā Tū. An excursion to one of the area's wellness spas is also a must! Try the Polynesian Spa for an invigorating soak in its natural mineral hot springs, Wai Ariki offers an indulging and unwinding restorative journey or pay a quick visit to Secret Spot for a soak and a delicious smash burger! If it is a thrill you are looking for, spike your adrenaline at Rotorua Canopy Tours, soaring above the ancient native forest below. Alternatively, head up the Skyline Rotorua Gondola for soaring lake views, and ride the luge at night for an extra thrill. Make the most of your time in Rotorua with an excursion through the Wai-O-Tapu Thermal Wonderland, one of the area's most colourful volcanic attractions. Whatever you are after, Rotorua is almost certain to have it!

SUGGESTED ACTIVITY - National Kiwi Hatchery Experience

The National Kiwi Hatchery Experience is a special opportunity to gain insight into and view this highly regarded conservation centre. Developed with the visitor experience in mind, the hatchery boasts special viewing opportunities and is hosted by kiwi expert guides who ensure guests leave fully informed and all questions answered. Learn all about New Zealand's intriguing national icon and the efforts of the kiwi husbandry team, see and discover what it takes to hatch and rare chicks, and if you're lucky see baby chicks in person!

SUGGESTED ACTIVITY - Original Ziplining Experience with Rotorua Canopy Tours

Embark on a three-hour adventure through the native New Zealand forest. Journey through the beautiful forest canopy via an incredible network of trails, tree platforms, Ziplines and swing bridges. See breathtaking views of the woodland valleys and hills as you fly through tight openings in the trees. In between the thrill of the ziplines and suspended tree bridges, your guides will share their passion and knowledge for the forest and the conservation challenges to preserve it. It is important you read and understand the risks associated with this activity. For more information see [here](#).

SUGGESTED ACTIVITY - Te Pā Tū Evening Māori Cultural Experience - Dinner Included

New Zealand's Most Awarded Cultural Attraction, presenting Te Pā Tū. Feast on song, drama, tradition, and divine seasonal kai (cuisine) within the forest Pā (village) blanketed by towering Tawa trees, blazing bonfires, and a forest-formed amphitheatre. Te Pā Tū shares Māori history, traditions, and cultural aspirations across 4-hours of celebration and feasting. These events change with each season of the Maramataka, the Māori lunar calendar.

Your accommodation: Millennium Hotel Rotorua

Millennium Hotel is Rotorua's largest 4-star deluxe hotel. Perfectly situated in the heart of the city overlooking Lake Rotorua. Five levels of accommodation offer guests a wide variety of scenic views.

Meals included: Breakfast



Day 5



SUGGESTED ACTIVITY - Wai-O-Tapu Thermal Wonderland

Wai-O-Tapu Thermal Wonderland is a spectacular showcase of New Zealand's colourful and unique geothermal elements sculpted by thousands of years of volcanic activity. You will be introduced to a diversely different natural landscape, extending over 18-sq. km. Enjoy viewing the volcanic features as you walk at your own pace along well-defined tracks. Relax in the first-class Visitor Centre, home to the Gift Shop and Caf  facilities. Visit the Mud Pool, the largest in New Zealand, it was originally the site of a large mud volcano which was destroyed through erosion in the 1920s. See the history and beauty of the Lady Knox Geyser at 10:15 am every day where a daily eruption happens of up to 20 metres.

Rotorua to Wellington

The drive from Rotorua to Wellington takes you via the township of Taup  home to New Zealand's largest lake. Following the lakeshore South you'll pass Turangi and then ascend the central plateau onto the high country Rangipo Desert. Skirting the edge of Tongariro National Park, you'll reach the military town of Waikaremu before descending through rich farmland and the rural towns of Taihape And Mangaweka. Follow the coast through Paraparaumu, Paekakariki and Plimmerton to arrive at your destination, Wellington.

Wellington

Wellington known in M ori as Te Whanganui-a-Tara is home to New Zealand's centre of government. Often referred to as 'mini Melbourne', this windy city is a melting pot of art, culture, food, and fashion. Quirky laneway bars, underground art shows, and hipster eateries make up its inner-city vibe, while a host of sandy beaches outside the urban bustle bring a cheerful holiday feel. Head to Te Papa Museum for a history lesson and a ticket to one of its many international exhibitions or jump aboard the Wellington Cable Car - the only running funicular railway in the country. For those with an eye for boutique, fashion wander through Cuba St to sample some of the city's best vintage stores. Break for coffee at a hipster cafe and be sure to snap a pic outside the 'Beehive,' New Zealand's parliamentary debate chamber. Go behind the scenes at Weta Workshop Experience, the Oscar Award Winning design studio behind Lord Of The Rings, The Hobbit, and Avatar. If you're a foodie at heart, a two-hour round trip to Martinborough is a must-do. Take your time as you wind through spectacular wine country. For an educational day out, learn about New Zealand's native species at Zealandia, the world's first fully-fenced eco-sanctuary and home to over 40 types of endangered and native birds.

Your accommodation: Hotel Ibis Wellington

Hotel Ibis Wellington is ideally located in Featherston Street in the heart of Wellington City and easy walking distance to Wellington's famous cafe lifestyle.

Meals included: Breakfast



Day 6



SUGGESTED ACTIVITY - W ta Workshop Experience

W ta Workshop has been making cool stuff for film and TV since 1987. The crew has brought to life beloved characters and epic special effects for iconic blockbusters like The Lord of the Rings, The Hobbit, Avatar and Black Panther: Wakanda Forever.

Step into W ta Workshop Experiences and explore a world of creativity, physical effects and movie magic on a guided tour through our creative home base. You'll learn about the making of props, creatures and costumes created for your favourite films. Get hands-on with unique pieces from many departments, catch the artists at work and discover how Weta have grown into the award-winning workshop you see today.

Zealandia By Night Wildlife Sanctuary Tour

Taking a night tour of Zealandia wildlife eco-sanctuary is an unforgettable experience and one that comes highly recommended. A conservation success and safe haven for some of New Zealand's rarest native animals, Zealandia is home to many remarkable species of birds, reptiles and insects living wild within a beautiful 225 hectare (one square mile) valley, just 10 minutes from the central city.

Your accommodation: Hotel Ibis Wellington

Hotel Ibis Wellington is ideally located in Featherston Street in the heart of Wellington City and easy walking distance to Wellington's famous cafe lifestyle.

Meals included: Breakfast



Day 7



Interislander Ferry Wellington to Picton

The 92 km journey between Wellington and Picton takes around 3 hours and has been described as 'one of the most beautiful ferry rides in the world'. Leaving Wellington Harbour the ferry passes many interesting points such as Pencarrow Head on top of which is New Zealand's oldest lighthouse (1859). Red Rocks is home to a seal colony and Oterangi Bay is the site which recorded the country's highest ever wind speed of 268 kph (167 mph).

From the Cook Strait spectacular views of the Kaikōura Ranges on the South Island can be enjoyed and dolphins and many sea birds are often seen. Around one hour of the cruise takes you through the Marlborough Sounds and this region of bush covered mountains, small islands, crystal clear waters and secluded bays offer remarkable photographic opportunities. The final leg of the cruise travels through Queen Charlotte Sound before coming to an end in the picturesque town of Picton.

SUGGESTED ACTIVITY - Premium Lounge with Interislander

Escape to Interislander's Premium Lounge for sensational views, child-free serenity, and locally sourced food and drink. Interislander's Premium Lounge has enhanced its offering to bring you an elevated travel experience across Cook Strait. Enjoy delicious food and drink, attentive service, and prime positions for appreciating the spectacular views. Whether you're looking to relax or chat with your travel companions, the Premium Lounge provides the ideal space. With varied seating options, you can choose a cosy spot to watch the stunning scenery and taste a selection of seasonal snacks included in your ticket.

Collect Rental Car

This tour's from price includes an intermediate-sized vehicle, setting you up for comfortable travels. Yet, we understand every adventure is unique! Feel free to select the perfect wheels from our incredible collection of rental cars, spanning from economy hatchbacks to premium SUVs.

Picton

Picton is a picturesque portside town at the top of the South Island. Gateway to the forest, marine and island attractions of the Marlborough Sounds, Picton is built around a sheltered harbour. Home to cafes, restaurants and galleries it also has a floating maritime museum and aquarium. Picton is also the starting point for Queen Charlotte Track, one of New Zealand's leading hiking trails.

Your accommodation: Edit Picton

Located in the heart of Picton, only a short walk to the marina, shopping & dining precinct and the ferry terminal. Being in the Marlborough region, it is the gateway to the top of the picturesque South Island and Queen Charlotte Sound.

Meals included: Breakfast



Day 8



SUGGESTED ACTIVITY - Seafood Odyssey Cruise with Marlborough Tour Company

Enjoy the sights and sounds of the Queen Charlotte Sound with seemingly endless bays and coves to explore and different scenery around each corner. Seafood Odyssey Cruise offers a unique range of sightseeing, birdlife and wildlife. Learn about the Marlborough Sounds area, the local seafoods grown and enjoy a fabulous seafood tasting on board.

Picton to Kaikoura

From Picton head south on State Highway One towards Blenheim, and the wine-producing region of Marlborough. Ideally located to enjoy an afternoon sampling the local produce, stop for a guided wine tour with Full Day Marlborough Wine Tour. Crossing the dry hills of the Marlborough ranges you head towards one of the most spectacular coastlines of the South Island, the Kaikoura Coast. The road hugs the shore for around 50 kilometres and offers many chances to view the native wildlife such as seabirds and New Zealand fur seals. To the east is the Pacific Ocean and to the west you'll follow alongside the Kaikoura Ranges before arriving into the bustling Kaikoura Township.

Kaikōura

Kaikōura is a stunning coastal town known for its rich marine life and dramatic scenery. Visit the fur seal colony, take a whale-watching cruise, or swim with playful dusky dolphins. The town is rich with attractions, walking tracks, and activities for every visitor. A walk around the Kaikōura Peninsula is a must, where you can explore tide pools teeming with marine life, observe sea creatures basking on the rocks, and, for bird lovers, spot the impressive native albatross. Just be sure to keep a respectful distance from any sea lions you meet. Highlights like Ohau Point and historic Fyfe House offer insight into the region's wildlife and whaling past. Finish your visit by sampling the fresh local seafood, renowned for having some of the best fish and chips in the country, or by taking a relaxing wander through the tranquil Lavendyl Lavender Farm.

SUGGESTED ACTIVITY - Zipline & Native Forest Tour with EcoZip Kaikoura

Enjoy a scenic journey to Kaikōura's beachfront airfield, followed by a 4WD adventure crossing the braided Kahutara River to Rakanui Station. Take in panoramic views of rolling farmland, lush valleys, and snowcapped mountains before embarking on an exhilarating 5-zipline course, including twin lines for side-by-side rides. Learn fascinating local history from expert guides and enjoy a walk through native forest, with a chance to plant a tree during winter as part of Eco Zip's conservation program. An unforgettable eco-adventure awaits! It is important you read and understand the risks associated with this activity before travel. For more information, please see [here](#)

Your accommodation: Sudima Hotel Kaikōura

This state-of-the-art waterfront hotel in Kaikōura has a 4.5 star rating with an outstanding in-house restaurant, a bar and conference facilities.

Meals included: Breakfast



Day 9



Ocean's Cabin with Whale Watch Kaikōura

Experience New Zealand's only marine-based whale-watching company. Whale Watch Kaikōura offers a once-in-a-lifetime, up-close encounter with the giant Sperm Whale. You are also likely to encounter New Zealand fur seals, dolphins, and albatross. Depending on the season you may also see Pilot, Blue, and Southern Right whales as well as migrating humpbacks. Often orcas can be spotted here and the world's smallest dolphin, the Hector's, occasionally makes an appearance.

Kaikōura to Christchurch

Travel down the coast before heading inland through the North Canterbury wine region - the Waipara Valley. If you've time on your hands we recommend taking a detour to Hanmer Springs for relaxing dip in its thermal pools. Arriving into Christchurch you'll see a new and improved city, steadily rising from the ruins of the 2011 and 2010 earthquakes.

Christchurch

Christchurch known in Māori as Ōtautahi, is the largest metro area in the South Island. Commonly referred to as New Zealand's "Garden City", Christchurch is home to one of the biggest public parks in the country, and beautiful botanic gardens. The city was hit with devastating earthquakes in 2010 and 2011, now the city crosses the line between its English heritage and a new modern architecture. To take in some arts and culture, pay a visit to the Canterbury Museum or the Christchurch Art Gallery. Take a step back in time with a tram around the city or punt along the Avon River. If tasting your way around the city is your means of travel, try out a cultural eating tour. A short drive from the CBD will lead you to the outskirts of the Banks Peninsula beachside suburb of Sumner or through the tunnel to Lyttleton Harbour which hosts fantastic markets on Saturday mornings.

Your accommodation: Scenic Hotel Cotswold

The Scenic Hotel Cotswold is just a few minutes walk to boutique shopping at Merivale and Hagley Park. The distinctive architecture of the Scenic Hotel Cotswold reflects Christchurch's image as the most English of cities outside of England.

Meals included: Breakfast



Day 10



Explore Christchurch

Following earthquakes that razed its centre and much of the outlying suburbs, Ōtautahi-Christchurch is well into a billion-dollar makeover. In the middle of the Canterbury Plains, bordering the Pacific Ocean, New Zealand's newest city is an ideal gateway to exploring the middle of the South. Go punting on the Avon River, take a historic tram ride, catch the gondola to the rim of an extinct volcano or do all three! See the world's only Cardboard Cathedral and for nature enthusiasts - wander the renowned Christchurch Botanic Gardens, or head to Oxford Terrace in the city to find a great spot to eat or drink. Drive an hour in any direction to ski, mountain bike, wine taste, whale-watch, bungee jump or play golf. Take the winding Port Hills road to the French settlement of Akaroa & Banks Peninsula and tour the vines in Waipara for an authentic New Zealand wine-tasting experience.

SUGGESTED ACTIVITY - Christchurch Gondola

In the Heathcote Valley, just a 20-minute drive from the heart of Christchurch City, ride the Christchurch Gondola for nearly a kilometer to the collapsed rim of an extinct volcano, which exploded six million years ago. Take in the spectacular panoramic views of the central city, Lyttleton Harbour, Banks Peninsula, Canterbury Plains, and the distant peaks of the Southern Alps. Wander the summit complex, enjoy a coffee or lunch in the cafe, and choose one of many nature walks to explore or visit the Christchurch Discovery Ridge, a dramatic reconstruction of the history of the Port Hills and Christchurch.

SUGGESTED ACTIVITY - International Antarctic Centre General Admission

The International Antarctic Centre aims to recreate the atmosphere and environment of Antarctica, providing visitors with an interactive, fun, and educational experience. Feel the full Four Seasons of Antarctica, where you'll experience a custom-built snow and ice experience, then warm up in the Scott Base interior exhibit, a replica Antarctic field camp, or other informative displays in the gallery. You'll also learn about life in modern-day Antarctica, view real little blue penguins, and experience a thrilling ride in a Hagglund all-terrain vehicle.

Your accommodation: Scenic Hotel Cotswold

The Scenic Hotel Cotswold is just a few minutes walk to boutique shopping at Merivale and Hagley Park. The distinctive architecture of the Scenic Hotel Cotswold reflects Christchurch's image as the most English of cities outside of England.

Meals included: Breakfast



Day 11



Christchurch to Aoraki-Mt Cook National Park

Drive through the heart of the South Island, crossing the vast Canterbury plains. Catch your breath in Geraldine before continuing through Fairlie. Ascending Burkes pass you'll come to the picturesque town of Lake Tekapo. Follow the road and take in the view of Aoraki-Mt Cook (New Zealand's tallest mountain) from the shores of Lake Pukaki, known for its glacier fed turquoise blue colour. Continue along the lake to your final destination Aoraki-Mt Cook Village.

Aoraki-Mt Cook National Park

At 3754m Aoraki-Mt Cook is Aotearoa-New Zealand's highest mountain, located deep in the heart of the Southern Alps. As well as its impressive beauty, Aoraki-Mt Cook National Park is also home to a huge range of awe-inspiring sights and activities. Take to the air with Mt Cook Ski Planes for a scenic flight that includes a glacier landing. At around 27 kilometres long the Tasman Glacier is New Zealand's longest and a Glacier Explorers tour allows you to see its unique features up close.

There are many short hikes in and around the park and these are well signposted around the village. Those with an interest in the night sky should take a Big Sky Stargazing tour with the Hermitage Hotel. The region is considered to have one of the clearest night skies in the world and is one of the few gold-rated dark sky reserves worldwide.

Visit the Sir Edmund Hillary Alpine Centre for insight into this region's mountain climbing history. You'll also learn of Sir Ed's incredible achievements and his dedication to helping others around the world.

SUGGESTED ACTIVITY - Glacier Highlights - Scenic Flight with Glacier Landing

Take in the spectacular Southern Alps, including New Zealand's highest peak Aoraki Mt Cook and the constantly changing glacial landscape. See the Hochstetter Icefall as you fly beneath the face of Mount Cook then along the length of the Tasman Glacier before landing on the glacier itself. Experience the silence of the mountains, broken only by the rumbling of an avalanche and creaking of the snow and ice beneath your feet. You'll take off again for another incredible flight over peaks, ice falls, alpine lakes and climbing huts. This flight offers fantastic close-up views of Aoraki Mount Cook, Mt Tasman and the Southern Alps from Aoraki Mount Cook National Park. It is important you read and understand the risks associated with this activity. For more information please see [here](#).

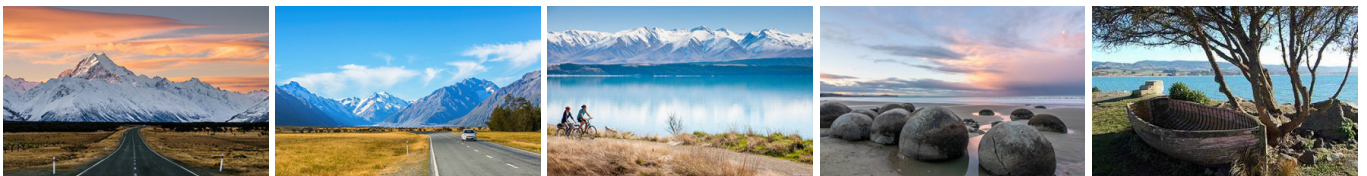
Your accommodation: Hermitage Hotel Room Mount Cook View

The Hermitage Hotel ringed by magnificent snow-capped peaks of the Southern Alps, is a world-renowned tourist destination and has been an icon of superior accommodation and dining since 1884.

Meals included: Breakfast



Day 12



Aoraki Mt Cook National Park to Dunedin

Leave Aoraki Mt Cook National Park and travel past Twizel, one of the locations for the Lord of the Rings films. Go through Omarama, the gliding capital of New Zealand. Continue down the Waitaki Valley follow the hydro power generating system to the rural town of Kurow, home to the divine Valli Wines. Stop for a sip or continue on to the east coast. Stretch your legs in Oamaru, known for its white stone buildings constructed with the local Oamaru Stone and Steampunk influence. If you were a little late off the mark this morning you may get the chance to see the blue penguins come ashore at dusk. Continue south down the coast to Moeraki, and take a detour towards the beach to see the Moeraki Boulders, a unique geological feature well worth a look. As you arrive in Dunedin, take in the city's Edwardian and Scottish heritage reflected in the buildings around the city centre The Octagon.

Dunedin

Dunedin, known in Māori as Ōtepoti, is referred to as the "Edinburgh of the Southern Hemisphere". The city has a rightly deserved reputation as one of the best-preserved Victorian and Edwardian cities in the Southern Hemisphere. Of particular note is Dunedin Railway Station, built 1904 - 1906, and St Paul's Cathedral in the Octagon. The Otago Museum is renowned for its Māori and Pacific Island collections and natural history displays. A visit to the Speights, New Zealand's oldest brewery, is also considered a must while in Dunedin. The Botanic Gardens is a great spot and at the right time of year, you can witness the Rhododendron Dell in bloom. The Otago Peninsula is the only home in the world to the Northern Royal Albatross. The Peninsula can be visited for the day from Dunedin and the stunning harbor landscape and wildlife are worth exploring. High among the rolling hills of the Peninsula is Larnach Castle, the grand home of an early politician. Construction of the castle began in 1871 and was completed 12 years later. From here, views out to sea and back towards the city emphasize the singular beauty of Dunedin and its jewel-like harbor.

Your accommodation: Kingsgate Hotel Dunedin

Located right in the heart of the city, Kingsgate Hotel Dunedin has the CBD right at its doorstep. The Otago Museum is just a stroll away, while the beach is a mere 10-minute drive. This hotel boasts sunny north-facing guest rooms, brimming with amenities. All rooms feature balconies, an excellent vantage point to view the city.

Meals included: Breakfast



Day 13



Explore Dunedin and the Otago Peninsula

Known as the Edinburgh of the South, Dunedin City has a heavy Scottish influence. Surrounded by rugged coastal plains and windswept beaches it's home to an eclectic mix of historical and modern architecture as well as industrial technology. Renowned for its Flemish Baroque-inspired 'gingerbread house' Railway Station, this university town is bustling with life. Head to the Saturday farmers market held in the aforementioned railway grounds for a taste of organic produce, handmade crepes and local honey. Explore the many cafes and wine bars in The Octagon, then continue on a self-guided walking tour of the internationally acclaimed Street Art dotted around the city. Drive to the coast and watch the freighters passing in the distance while you sunbathe, or hire a mountain bike and test your legs on one of the many trails available in the area. For a more immersive historical experience, follow the coast to New Zealand's only castle, Larnach Castle. On your way back be sure to head to the Otago Peninsula to see the largest mainland Albatross colony in the world.

SUGGESTED ACTIVITY - Monarch Wildlife Cruise from Wellers Rock

An unforgettable experience viewing rare and fascinating wildlife. Board the Monarch Boat and take in the fascinating sight of the Northern Royal Albatross as it comes into nest on the spectacular cliffs of Taiaroa, Otago Peninsula. You'll also see eight other species of birds including sooty shearwaters and petrels as well as sea lions and fur seals and if you're lucky dolphins and whales.

SUGGESTED ACTIVITY - Larnach Castle and Gardens

Larnach Castle, New Zealand's only castle, was built in 1871 by politician and merchant William Larnach, a visionary who played a key role in shaping the country's early history. Constructed for his beloved first wife, Eliza, the castle's shell took 200 workmen three years to complete, followed by twelve years of intricate interior craftsmanship. Perched high on the Otago Peninsula, the castle offers stunning views over Dunedin City. Its gardens hold International Garden of Significance status and feature a unique collection of antiques, including a rare nine-piece Totara knot suite. The Ballroom Café provides the perfect spot to relax and enjoy refreshments while reflecting on your visit. The ballroom itself has a fascinating history, having once served as an asylum, an antique sales room, and even a sheep pen before its beautiful restoration. With a self-guided tour, you can explore the castle and gardens at your own pace.

SUGGESTED ACTIVITY - Taieri Gorge Railway Scenic Train

Experience the breathtaking Taieri Gorge on Dunedin's iconic scenic train journey! Travel through stunning Otago landscapes, marvel at the engineering feats of the historic Taieri Gorge Railway, and hear captivating stories of the region's past from our onboard commentary. See the majestic Wingatui Viaduct, the tallest wrought iron structure in Australasia, and explore hand-carved tunnels. Enjoy comfortable, all-weather travel with onboard refreshments and photo stops. Choose a return trip from Dunedin's historic Railway Station or opt for a one-way journey to Pukerangi. Escape the digital world and reconnect with nature on this unforgettable New Zealand rail experience.

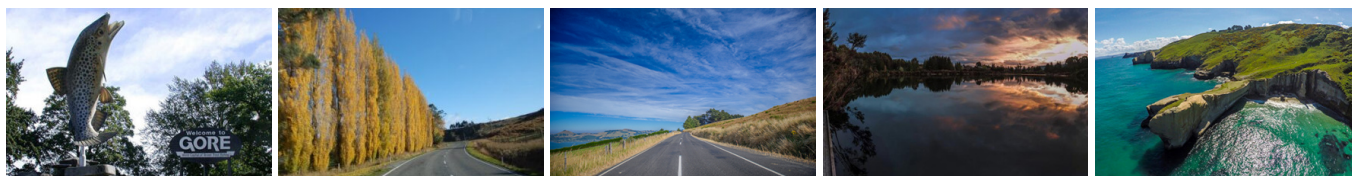
Your accommodation: Kingsgate Hotel Dunedin

Located right in the heart of the city, Kingsgate Hotel Dunedin has the CBD right at its doorstep. The Otago Museum is just a stroll away, while the beach is a mere 10-minute drive. This hotel boasts sunny north-facing guest rooms, brimming with amenities. All rooms feature balconies, an excellent vantage point to view the city.

Meals included: Breakfast



Day 14



Dunedin to Te Anau

The drive to Te Anau takes you through classic Southland farmland scenery. Pass through the tranquil river town of Balclutha, the largest town in South Otago, which hosts a range of shops and services. Balclutha is memorable for its arched concrete bridge, under which flows the mighty Clutha River. The river is open for salmon and trout fishing all year round. As you head inland, you will pass through the small rural town of Clinton before reaching Gore, the official home of country music. It's also known for great fly fishing, with the Mataura River and many other productive streams close by. Take time to enjoy the lush farmland scenery as you journey east towards your lakeside destination of Te Anau, the gateway to Fiordland National Park and Piopiotahi-Milford Sound.

Te Anau

It is the gateway to Fiordland National Park and a perfect base to visit Piopiotahi-Milford Sound. The Milford Road originates here, and this is arguably one of the most scenic stretches of highway in the country. Te Anau sits on the shores of spectacular Lake Te Anau, which reaches depths of 417 meters. Te Anau Township is the starting point for many walking tracks, including two of New Zealand's Great Walks, the Milford track and the Kepler track. Apart from hiking, you could go kayaking, lake cruising, fishing, or exploring Te Anau Glowworm Caves. You could go for a bike ride alongside the lake towards Lake Manapouri, on a popular Lake to Lake biking route. Along the way, you will pass a bird sanctuary specialising in Takahe, and other native birds.

Te Anau Glowworm Caves with RealNZ

Begin your Te Anau Glowworm experience with a scenic cruise across Lake Te Anau on board the luxury catamaran, Luminosa, to the western side of the lake. On arrival, you'll enter the caves through Cavern House, where informative displays detail the history of this 12,000 year old underground network. You'll then explore by limestone pathway while your guide points out hidden whirlpools, sculpted rock formations, and a rushing underground waterfall. See a magical display of thousands of glowworms as you glide through the darkness in a small boat.

Your accommodation: Kingsgate Hotel Te Anau

Kingsgate Hotel is conveniently located only a short five-minute walk along the shore of beautiful Lake Te Anau to reach the town centre. The hotel is set amongst manicured gardens on the tranquil shores of Lake Te Anau.

Meals included: Breakfast



Day 15



Te Anau to Milford Sound, returning to Te Anau

The magnificent Milford Road leading to Milford Sound offers some of the most beautiful and iconic scenery in the country. Countless photo opportunities mean this drive should not be rushed. From crystal clear lakes and towering mountains to lush glacier-formed meadows, this area is abundant with picture-perfect scenes. Continue on through the Homer Tunnel, an engineering marvel at 1219 meters long. Arriving in the village of Milford, you will be greeted with an amazing view of Mitre Peak. A day cruise into the heart of the sound is not to be missed. You'll learn about how this magnificent area was formed and experience the wonder of the falls that line the Fjord before back-tracking the way you came.

Milford Sound Cruise with Real NZ - Lunch Included

Get up close and personal with Milford Sound on a leisurely cruise of this spectacular fiord. From thundering waterfalls to sky-high mountains to lush rainforests, Milford has it all. Experience the spray of a waterfall as you cruise close to sheer rock faces. Informative, participative, and relaxed, this is the perfect way to experience Milford Sound to the fullest. It is important you read and understand the risks associated with this activity. For more information, see [here](#).

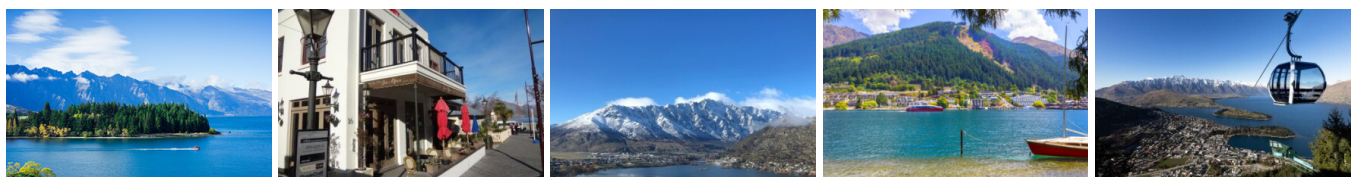
Your accommodation: Kingsgate Hotel Te Anau

Kingsgate Hotel is conveniently located only a short five-minute walk along the shore of beautiful Lake Te Anau to reach the town centre. The hotel is set amongst manicured gardens on the tranquil shores of Lake Te Anau.

Meals included: Breakfast, Lunch



Day 16



Te Anau to Queenstown

Journey across expansive tussock lands en route to Queenstown. Pass through Mossburn, renowned as the deer capital of New Zealand, and continue through the picturesque Southland countryside. As the road begins to trace the edge of Lake Wakatipu, marvel at the breathtaking views from the Devil's Staircase. Finally, approach Queenstown, the adventure capital of New Zealand, with the Remarkables mountain range standing majestically in the backdrop.

Queenstown

Queenstown known in Māori as Tāhuna, is home to many adrenaline-inducing activities. Nestled on the shores of Lake Wakatipu, this alpine town has very distinct seasons, and most adrenaline-filled activities can be accessed year-round. Queenstown is home to jet boating, bungee jumping, rafting, skydiving, paragliding, and even indoor thrills. If you want that rush - head out on the Shotover Jet, dive off the Nevis Bungy, freefall on the Canyon Swing, or Zip line the Gondola. While arguably the brightest gem in New Zealand's crown, Queenstown offers far more than an action-packed getaway. If you're looking for a slightly slower pace, there are plenty of recreational activities, including hiking and biking trails to explore, guided tours, boat cruises, scenic flights, or spa and wellness options to help you get away. Head to the lakefront, eat at one of the al fresco eateries, and soak up the local vibes; catch a ride on the iconic 100-year-old steamship the TSS Earnslaw; or take the Skyline Gondola and enjoy bird's-eye views of the Remarkables mountain ranges and Lake Wakatipu. Pack a picnic and go for a hike, only 20 minutes from Central Queenstown, Coronet Peak opens for summer sightseeing. You can ride the Peak Gondola to the top for panoramic views and hike the trails, or go for a bike ride on many excellent biking trails. In winter, Queenstown becomes a world-class winter resort, with four ski areas and a range of activities, bars, restaurants, and ways to relax and unwind.

TSS Earnslaw Cruise and Walter Peak Gourmet BBQ Dinner

Enjoy a quintessential Kiwi experience, a delicious gourmet BBQ buffet meal, and a farm demonstration in a stunning lakeside setting. Take in the stunning views of Lake Wakatipu and its surroundings as you cruise across the lake to the historic Walter Peak high country farm aboard the TSS Earnslaw Steamship. Enjoy the ambiance of the heart of the stately homestead while your Colonel's Homestead Restaurant chef prepares a gourmet BBQ dinner. Your seasonal menu includes an extensive selection of local New Zealand produce, including succulent meats and a selection of delicious vegetables and salads. Complete your meal with your choice of delicious desserts, or New Zealand cheeses. After dinner, watch the farm dogs in action with a sheep-herding demonstration and say hello to the other farm animals. Finally, cruise home under the southern stars and enjoy the fresh night air as the lights of Queenstown draw ever closer.

Your accommodation: Copthorne Hotel & Apartments Queenstown Lakeview

Copthorne Hotel & Apartments Queenstown Lakeview is located on Frankton Road, the main arterial route into Queenstown - With the centre of town only a short 10-minute stroll away.

Meals included: Breakfast, Speciality Dinner



Day 17



Explore Queenstown

Well-known as New Zealand's 'adventure capital', Queenstown is home to a range of adventures, from the world's first and most famous bungy jumps to jet boat thrills, white-water rafting, and skydiving. However, Queenstown offers far more than a fast-paced, action-packed holiday. Settled on the shores of beautiful Lake Wakatipu beneath a soaring panorama of the Remarkables Mountain Range, this alpine town is surrounded by many historic, gastronomic, and scenic wonders. Take a stroll through the beautiful lakefront parks and gardens, browse through market stalls on weekends, dine in wonderful al-fresco restaurants, or ride on the 100-year-old historic Steamship - TSS Earnslaw to Walter Peak Station. Take the Queenstown Gondola up to Bob's Peak and soak up the panoramic views of the magnificent lake and mountain ranges. And after all of that, if you do want the adrenaline rush, Queenstown is known for taking your pick from the Shotover Jet, Canyon Swing, Zipline, Luge, or Heli-hike.

SUGGESTED ACTIVITY - Wilderness Jet Experience with Dart River Safaris

Journey deep into the heart of the world-renowned Mt Aspiring National Park, where myth, heritage, and fantasy come to life. As one of Queenstown's most exhilarating activities, the Wilderness Jet adventures on a spectacular journey deep into the heart of the world-renowned Mount Aspiring National Park. It is important you read and understand the risks associated with this activity. For more information please see [here](#).

SUGGESTED ACTIVITY - Kawarau Bridge Bungy Jump with AJ Hackett

Queenstown is where bungy jumping was pioneered by AJ Hackett and the first commercial jump started in 1988 at the Kawarau Bridge (on the main road into Queenstown from the east). If a bungy jump is on your 'to do' list then Queenstown is the place and the Kawarau Bridge is a 43 metre jump from an historic bridge with an optional 'dip' in the Kawarau River. It is important you read and understand the risks associated with this activity. For more information see [here](#).

SUGGESTED ACTIVITY - Gold Heritage: Macetown with Nomad Safaris

A true four-wheel drive, off-road adventure exploring the abandoned gold mining settlement of Macetown. Follow the miners' old wagon trail and explore the historic gold mining town. Long since abandoned after the gold rush, Macetown has now been transformed into a Department of Conservation reserve. Experience the narrow, rugged road and learn about the tumultuous history of the region as you take in the town remnants and spectacular scenery. It is important you read and understand the risks associated with this activity. For more information see [here](#).

Your accommodation: Copthorne Hotel & Apartments Queenstown Lakeview

Copthorne Hotel & Apartments Queenstown Lakeview is located on Frankton Road, the main arterial route into Queenstown - With the centre of town only a short 10-minute stroll away.

Meals included: Breakfast



Day 18



Queenstown to Fox Glacier

Crossing the Crown Range the highest sealed road in the country, you'll pass through the alpine town of Wanaka. Following the shores of both Lake Wanaka and Hawea, you'll enter the township of Makarora, the gateway to Mt. Aspiring National Park. Stretch your legs on a walk to Blue Pools, a ten-minute stroll through lush rainforest. Marvel at the native beech and countless waterfalls as you continue toward the West Coast.

Crossing the Haast River you are now truly in the Wild West, a 600-kilometre stretch of bush, rainforest and podocarp forest. Continue to arrive at Fox Glacier, your destination for the night. Home to the largest glacier on the west coast, Fox is 13 kilometres long and ends in rainforest only 250 metres above sea level.

Your accommodation: Heartland Hotel Glacier Country

Heartland Hotel Glacier Country is located right in the centre of Fox Glacier township, putting you in easy reach of the unique experiences available within Westland National Park.

Meals included: Breakfast



Day 19



Fox Glacier

The mighty Fox Glacier is the largest and longest of the stunning West Coast glaciers. Remarkably, it ends in a temperate rainforest just 250 metres above sea level, only twelve kilometres from the sea. The valley at the glacier's head boasts more peaks than any other in New Zealand. Like all glaciers, the Fox Glacier advances and retreats, with its latest surge evident in the bulging lower ice fall. Alpine Guides offers access to the lower part of the glacier via a hidden track that winds through regenerating native forest, providing stunning views of the glacier's upper reaches. Fox Glacier Township, often described as the more "laid-back" of the twin Glacier Country townships, is celebrated for its relaxed atmosphere, excellent cafés, and a variety of accommodation options. The township also enjoys breathtaking views of New Zealand's tallest peaks, Mount Cook and Mount Tasman. For an unforgettable experience, take a helicopter ride to admire the glacier from above or opt for a heli hike to get up close to its icy formations. Nearby, Lake Matheson, renowned for its mirror-like reflections, is just a five-minute drive west of Fox Township. A short 25-minute drive further west takes you to historic Gillespie's Beach, famous for its crashing surf and views of distant snow-capped mountains.

SUGGESTED ACTIVITY - Twin Glacier Scenic Helicopter Flight with The Helicopter Line

Experience the breathtaking beauty of not one, but two spectacular glaciers—Fox Glacier and Franz Josef Glacier. Get up close to their stunning neve and intricate ice formations, with a snowfield landing that's sure to be a highlight of your journey. Capture incredible photos, make a snowball, and create unforgettable memories during this 35-minute scenic flight with a snow landing. If weather conditions prevent your flight, your booking can be easily transferred to a similar tour with The Helicopter Line in Queenstown or Mt Cook. It is important to read and understand the risks associated with this activity. A full risk disclosure can be found [here](#).

SUGGESTED ACTIVITY - Fox Glacier and Lake Matheson Tour

Discover the stunning Fox Glacier and the pristine waters of Lake Matheson on this immersive day tour. Begin your journey with a pickup from your accommodation before heading toward Fox Glacier. Walk a scenic track through the lush, historic glaciated rainforest of Westland Tai Poutini National Park, where you'll encounter towering rimu and rata trees, mossy forest floors, and spectacular views of Fox Glacier, Fox Neve, and Mt Tasman—one of New Zealand's tallest peaks. Along the way, enjoy a cup of tea with your knowledgeable local guide while learning about glaciation, thermology (including a chance to dip your hand in a geothermal spring), geology, and the park's unique flora and fauna. Please note, for safety reasons, this tour does not go near the terminal face of the glacier. In the evening, visit the iconic Lake Matheson, renowned for its majestic mirror-like reflections at this tranquil time of day. With your guide, enjoy a treasure hunt for native fungi, orchids, and birds as you explore the peaceful trails. Pause to savour another cup of tea while soaking in the breathtaking scenery. As a protected and non-commercial lake within the UNESCO World Heritage area, Lake Matheson promises a serene and undisturbed experience free from kayakers or noisy jet boats.

Your accommodation: Heartland Hotel Glacier Country

Heartland Hotel Glacier Country is located right in the centre of Fox Glacier township, putting you in easy reach of the unique experiences available within Westland National Park.

Meals included: Breakfast



Day 20



Fox Glacier to Greymouth Train Station (Return Rental Car)

The drive north from Fox and Franz Josef takes you through the historic gold mining region of Ross and the town of Hokitika, a great place to explore the craft stores, in particular the jade or greenstone. The largest town on the West Coast, Greymouth is also the starting point for the TranzAlpine Scenic Train. Drop your rental car at the Greymouth Train Station depot located inside the train station building and board the TranzAlpine train.

TranzAlpine Scenic Train: Greymouth to Christchurch

Considered one of the world's great train journeys, the TranzAlpine Scenic Train takes you from Greymouth to Christchurch. Travel across the South Island from the west to the east coast through Arthur's Pass National Park. From the comfort of your carriage see lush beech forest, deep river valleys and the spectacular peaks of the Southern Alps. Descend to the windswept Canterbury Plains before arriving in the city of Christchurch.

Shared Transfer from Christchurch Train Station to Christchurch CBD Accommodation with Christchurch Touring Company

On arrival at the Christchurch railway station, you will be met by a driver and transferred to your Christchurch accommodation.

SUGGESTED ACTIVITY - TranzAlpine Scenic Plus Addon - KiwiRail

Feel like luxurious service, exclusive meals, inclusive drinks and priority check-in and boarding? The Scenic Plus add-on option is for you. Enjoy personal service with panoramic windows, spacious carriages and comfortable seating. The exclusive open-air viewing carriage is available if you feel like capturing the ultimate photo or simply wish to experience the great outdoors whilst travelling through the Southern Alps. Your food is prepared exclusively in a kitchen carriage, with paired drinks and a paddock-to-plate regionally inspired food menu all your senses will be fully engaged on this journey.

Your accommodation: Scenic Hotel Cotswold

The Scenic Hotel Cotswold is just a few minutes walk to boutique shopping at Merivale and Hagley Park. The distinctive architecture of the Scenic Hotel Cotswold reflects Christchurch's image as the most English of cities outside of England.

Meals included: Breakfast



Day 21



Private Transfer from Christchurch Accommodation to Christchurch International Airport with Christchurch Touring Company

A private transfer will collect you from your accommodation and transfer you to Christchurch International Airport in time for your departing flight.

Farewell from Aotearoa / New Zealand

Bid farewell to Aotearoa / New Zealand, taking with you unforgettable memories of its breathtaking landscapes and incredible adventures. In Māori, it is said mā te wā, which is not goodbye, it is see you soon!

Tour details

Departures:	Daily
Tour type:	Nationwide Self Drive
Starts:	Auckland
Finishes:	Christchurch
Tour length:	21
Accommodation:	Hotel 3 star
Car/transport type:	

Accommodation summary

Day 1	Sudima Auckland City
Day 2	Sudima Auckland City
Day 3	Millennium Hotel Rotorua
Day 4	Millennium Hotel Rotorua
Day 5	Hotel Ibis Wellington
Day 6	Hotel Ibis Wellington
Day 7	Edit Picton
Day 8	Sudima Hotel Kaikōura
Day 9	Scenic Hotel Cotswold
Day 10	Scenic Hotel Cotswold
Day 11	Hermitage Hotel Room Mount Cook View
Day 12	Kingsgate Hotel Dunedin
Day 13	Kingsgate Hotel Dunedin
Day 14	Kingsgate Hotel Te Anau
Day 15	Kingsgate Hotel Te Anau
Day 16	Copthorne Hotel & Apartments Queenstown Lakeview
Day 17	Copthorne Hotel & Apartments Queenstown Lakeview
Day 18	Heartland Hotel Glacier Country
Day 19	Heartland Hotel Glacier Country
Day 20	Scenic Hotel Cotswold