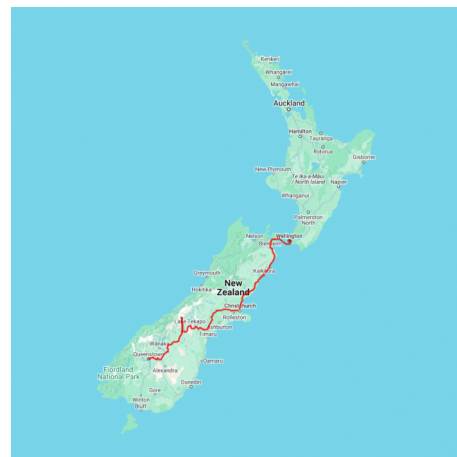


Wellington to Queenstown Self Drive Tour

From Wellington take the stunning journey on the Interislander ferry across the Cook Strait to Picton where you'll follow the Pacific Ocean coast south through the marine wildlife mecca of Kaikoura to Christchurch. After 2 nights in Christchurch, you'll cross the Canterbury Plains to the Southern Alps and Mt. Cook National Park. The final leg of your travels takes you to the alpine resort of Queenstown.

Starts in: Wellington
Finishes in: Queenstown
Length: 8days / 7nights
Accommodation: Motels
Can be customised: Yes

This itinerary can be customised to suit you perfectly. We can add more days, remove days, change accommodations, mix it up, add activities to suit your interests or simply design and create something from scratch. Call us today to get your custom New Zealand itinerary underway.



Inclusions:

- Includes: Late model rental cars
- Includes: Fully inclusive rental car insurance (excess may apply)
- Includes: Unlimited kms
- Includes: GPS navigation
- Includes: Airport & ferry terminal rental car fees
- Includes: Additional drivers
- Includes: Comprehensive tour pack (detailed itinerary, driving instructions, map/guidebooks, brochures)
- Includes: 24/7 support while touring New Zealand
- Included activity: Private transfer Wellington hotel to Interislander Ferry with IST
- Included activity: Electronic Travel Guide and In-Country Support App
- Included activity: Interislander Ferry Wellington to Picton

Day 1



Private transfer Wellington hotel to Interislander Ferry with IST

You will be collected from your hotel and transferred to the Interislander ferry terminal in time for your ferry check in.

Interislander Ferry Wellington to Picton

The 92 km journey between Wellington and Picton takes around 3 hours and has been described as 'one of the most beautiful ferry rides in the world'. Leaving Wellington Harbour the ferry passes many interesting points such as Pencarrow Head on top of which is New Zealand's oldest lighthouse (1859). Red Rocks is home to a seal colony and Oterangi Bay is the site which recorded the country's highest ever wind speed of 268 kph (167 mph).

From the Cook Strait spectacular views of the Kaikōura Ranges on the South Island can be enjoyed and dolphins and many sea birds are often seen. Around one hour of the cruise takes you through the Marlborough Sounds and this region of bush covered mountains, small islands, crystal clear waters and secluded bays offer remarkable photographic opportunities. The final leg of the cruise travels through Queen Charlotte Sound before coming to an end in the picturesque town of Picton.

Collect Rental Car

Choose a car to best suit your needs from our fantastic rental car range. From compact economy, hatchbacks to prestige SUVs.

Picton to Blenheim

It is a short 30 minute drive, as you'll follow the valley south to arrive in Blenheim, located in the heart of Marlborough - New Zealand's largest wine producing region. Go through acres of leafy green vines and marvel at the magnificent 'dry hills' of Marlborough in the distance.

SUGGESTED ACTIVITY - Half Day Marlborough Wine Tour with Sounds Connection

An afternoon among the vines! Be immersed in the Marlborough wine country with the Sounds Connection half day wine tour. Get collected from your accommodation and taken through three or four hand-picked wineries to taste the award-winning produce this region is known for. Hear about the history of winemaking in Marlborough as well as learning the unique processes each winery goes through.

Your accommodation: Blenheim Palms Motel

Located 100 m from the central shops and eateries, the Blenheim Palms Motel offers tasteful individually designed apartment-styled rooms.



Day 2



Blenheim to Kaikōura

Cross Marlborough and head towards one of the most spectacular coastlines of the South Island, the Kaikōura Coast. The road hugs the shore for around 50 kms and offers many chances to view native wildlife. To the east is the South Pacific Ocean and to the west the towering Kaikōura Ranges. Kaikōura Township is a bustling little place with many cafes, restaurants and shops, but the main reason for visiting here is the wildlife and it's one of the only places in New Zealand you can see whales year round.

Your accommodation: The White Morph, Kaikōura

Set on the Esplanade in Kaikōura, The White Morph enjoys commanding views of the ocean and mountains. Just a 10-minute walk into town, The White Morph has been beautifully placed so that you can take in the spectacular scenery of Kaikōura while enjoying the variety of attractions on offer.



Day 3



Kaikōura to Christchurch

Travel down the coast before heading inland through the North Canterbury wine region - the Waipara Valley. If you've time on your hands we recommend taking a detour to Hanmer Springs for relaxing dip in its thermal pools. Arriving into Christchurch you'll see a new and improved city, steadily rising from the ruins of the 2011 and 2010 earthquakes.

SUGGESTED ACTIVITY - Ocean's Cabin with Whale Watch Kaikōura

Experience New Zealand's only marine-based whale-watching company. Whale Watch Kaikōura offers a once-in-a-lifetime, up-close encounter with the giant Sperm Whale. You are also likely to encounter New Zealand fur seals, dolphins, and albatross. Depending on the season you may also see Pilot, Blue, and Southern Right whales as well as migrating humpbacks. Often orcas can be spotted here and the world's smallest dolphin, the Hector's, occasionally makes an appearance.

Your accommodation: Quest on Cambridge

Quest on Cambridge serviced apartment-style hotel rooms offer guests a relaxed and comfortable Christchurch accommodation experience. Each room has an open-plan living area, a fully equipped kitchen, and natural light. Quest on Cambridge is a short walk from the south shopping centre and to the Botanic Gardens.



Day 4



Explore Christchurch

Following earthquakes that razed its centre and much of the outlying suburbs, Ōtautahi-Christchurch is well into a billion-dollar makeover. In the middle of the Canterbury Plains, bordering the Pacific Ocean, New Zealand's newest city is an ideal gateway to exploring the middle of the South. Go punting on the Avon River, take a historic tram ride, catch the gondola to the rim of an extinct volcano or do all three! See the world's only Cardboard Cathedral and for nature enthusiasts - wander the renowned Christchurch Botanic Gardens, or head to Oxford Terrace in the city to find a great spot to eat or drink. Drive an hour in any direction to ski, mountain bike, wine taste, whale-watch, bungee jump or play golf. Take the winding Port Hills road to the French settlement of Akaroa & Banks Peninsula and tour the vines in Waipara for an authentic New Zealand wine-tasting experience.

SUGGESTED ACTIVITY - Christchurch Gondola

In the Heathcote Valley, just a 20-minute drive from the heart of Christchurch City, ride the Christchurch Gondola for nearly a kilometer to the collapsed rim of an extinct volcano, which exploded six million years ago. Take in the spectacular panoramic views of the central city, Lyttelton Harbour, Banks Peninsula, Canterbury Plains, and the distant peaks of the Southern Alps. Wander the summit complex, enjoy a coffee or lunch in the cafe, and choose one of many nature walks to explore or visit the Christchurch Discovery Centre, a dramatic reconstruction of the history of the Port Hills and Christchurch.

SUGGESTED ACTIVITY - Willowbank Wildlife Reserve

Nowhere else in New Zealand will you find such a wide range of New Zealand wildlife so close to you. Willowbank provides you with a "Kiwi Guarantee" and is home to New Zealand's largest and most accessible Kiwi viewing area. With this unique experience, you will see New Zealand's natural splendor firsthand, and view Kiwis that are not hidden behind glass. You will explore one of the most complete selections of New Zealand native and introduced wildlife in natural bush surroundings. Much of the Willowbank wildlife wander free and can be petted and fed.

Choose to explore the reserve yourself, or for an up-close Kiwi experience, you can take a guided tour.

Your accommodation: Quest on Cambridge

Quest on Cambridge serviced apartment-style hotel rooms offer guests a relaxed and comfortable Christchurch accommodation experience. Each room has an open-plan living area, a fully equipped kitchen, and natural light. Quest on Cambridge is a short walk from the south shopping centre and to the Botanic Gardens.



Day 5



Christchurch to Aoraki-Mt Cook National Park

Drive through the heart of the South Island, crossing the vast Canterbury plains. Catch your breath in Geraldine before continuing through Fairlie. Ascending Burkes pass you'll come to the picturesque town of Lake Tekapo. Follow the road and take in the view of Aoraki-Mt Cook (New Zealand's tallest mountain) from the shores of Lake Pukaki, known for its glacier fed turquoise blue colour. Continue along the lake to your final destination Aoraki-Mt Cook Village.

SUGGESTED ACTIVITY - Glacier Explorers

Experience 500-year-old icebergs up close on the Aoraki-Mt Cook terminal lake. The Glacier Explorers tour is the only one of its kind in New Zealand and one of only three in the world! Very few glaciers terminate into lakes and even fewer of them are accessible. See towering ice cliffs and floating icebergs from the safety of a specially designed boat. These boats provide a safe way to view unseen and inaccessible areas of New Zealand's largest glacier The Tasman.

SUGGESTED ACTIVITY - Sir Edmund Hillary Alpine Centre Museum and Theatre Explorer Pass with Hermitage

A tribute to New Zealand's Sir Edmund Hillary, a humanitarian, ambassador, and one of the world's greatest explorers. The centre showcases the Aoraki Mount Cook region, the history of climbing, and early transport used throughout the region. This comprehensive museum details the life of Sir Edmund Hillary, the Hermitage, and provides access to the 126-seat custom-designed theatre. Check out the daily film schedule which includes 3D Movies, documentaries, and 360-degree digital dome features.

Your accommodation: Mt Cook Motel

Mt Cook Motel, nestled in the heart of Mt. Cook Village, offers spacious self-contained units that provide comfort and convenience. Each unit is surrounded by breathtaking alpine mountain views, making it the perfect retreat for nature lovers and adventurers alike.



Day 6



Aoraki Mt Cook National Park to Queenstown

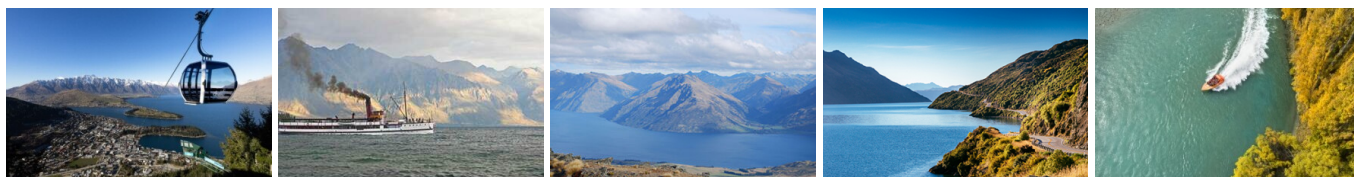
Leaving the alpine region of Aoraki Mt Cook, you'll travel through the lakeside town of Twizel, then a little further to Omarama the gliding capital of New Zealand. Continue on over the Lindis Pass, one of New Zealand's highest roads with a summit of 971 metres. Arrive in the quaint village of Tarras, then continue on a short way to the historic Bendigo Reserve, one of Otago's original gold mining settlements. Follow the road to Cromwell, and keep going through the sheer cliffs of the Kawarau Gorge towards Gibbston, one of New Zealand's premier wine growing regions. See the historic Kawarau Bridge where you can bungy jump or relax and watch others take the plunge. Approaching Queenstown, the Remarkables mountain range comes into view as you arrive into the adventure capital of New Zealand.

Your accommodation: Scenic Suites Queenstown

Scenic Suites Queenstown offers guests exquisite style, comfort and spectacular views over Lake Wakatipu and the Southern Alps. The hotel prides itself on its 4-star hospitality that will make your stay in Queenstown even more memorable.



Day 7



Explore Queenstown

Well-known as New Zealand's 'adventure capital', Queenstown is home to a range of adventures, from the world's first and most famous bungy jumps to jet boat thrills, white-water rafting, and skydiving. However, Queenstown offers far more than a fast-paced, action-packed holiday. Settled on the shores of beautiful Lake Wakatipu beneath a soaring panorama of the Remarkables Mountain Range, this alpine town is surrounded by many historic, gastronomic, and scenic wonders. Take a stroll through the beautiful lakefront parks and gardens, browse through market stalls on weekends, dine in wonderful al-fresco restaurants, or ride on the 100-year-old historic Steamship - TSS Earnslaw to Walter Peak Station. Take the Queenstown Gondola up to Bob's Peak and soak up the panoramic views of the magnificent lake and mountain ranges. And after all of that, if you do want the adrenaline rush, Queenstown is known for taking your pick from the Shotover Jet, Canyon Swing, Zipline, Luge, or Heli-hike.

SUGGESTED ACTIVITY - Shotover Jet Canyon Jet Boat Ride

Shotover Jet is the only company permitted to operate in the Shotover River Canyons. It's a thrilling ride! Skim past rocky outcrops at close range in your Shotover Jet 'Big Red', as you twist and turn through the narrow canyons at breathtaking speeds. And a major highlight - hold tight for the world-famous Shotover Jet full 360-degree spins!

SUGGESTED ACTIVITY - Gondola and 3 Luge Rides with Skyline Queenstown

In the heart of Queenstown, located 450 metres above town in the Ben Lomond Scenic Reserve is the Skyline Complex. A gondola ride to the summit makes for awe-inspiring views of the city surround. Arrive at the complex and wander the outside viewing decks for a picture perfect outlook. Then onto the Luge! The 800 metre luge track offers an exhilarating journey through banked corners, tunnels and dippers.

SUGGESTED ACTIVITY - TSS Earnslaw Cruise and Walter Peak Gourmet BBQ Dinner

Enjoy a quintessential Kiwi experience, a delicious gourmet BBQ buffet meal, and a farm demonstration in a stunning lakeside setting. Take in the stunning views of Lake Wakatipu and its surroundings as you cruise across the lake to the historic Walter Peak high country farm aboard the TSS Earnslaw Steamship. Enjoy the ambiance of the heart of the stately homestead while your Colonel's Homestead Restaurant chef prepares a gourmet BBQ dinner. Your seasonal menu includes an extensive selection of local New Zealand produce, including succulent meats and a selection of delicious vegetables and salads. Complete your meal with your choice of delicious desserts, or New Zealand cheeses. After dinner, watch the farm dogs in action with a sheep-herding demonstration and say hello to the other farm animals. Finally, cruise home under the southern stars and enjoy the fresh night air as the lights of Queenstown draw ever closer.

Your accommodation: Scenic Suites Queenstown

Scenic Suites Queenstown offers guests exquisite style, comfort and spectacular views over Lake Wakatipu and the Southern Alps. The hotel prides itself on its 4-star hospitality that will make your stay in Queenstown even more memorable.



Day 8



Return your vehicle to Queenstown Airport

Explore more of Queenstown before dropping your rental car at the airport depot and continuing your onward journey.

Farewell from Aotearoa-New Zealand

Bid farewell to New Zealand, taking with you unforgettable memories of its breathtaking landscapes and incredible adventures. In Maori, it is said mā te wā, which is not goodbye, it is see you soon!

Tour details

Departures: Daily
Tour type: Nationwide Self Drive
Starts: Wellington
Finishes: Queenstown
Tour length: 8
Accommodation: Motels
Car/transport type:

Included activities

Includes Interislander ferry crossing

Accommodation summary

Day 1 Blenheim Palms Motel
Day 2 The White Morph, Kaikōura
Day 3 Quest on Cambridge
Day 4 Quest on Cambridge
Day 5 Mt Cook Motel
Day 6 Scenic Suites Queenstown
Day 7 Scenic Suites Queenstown