



A Taste of the North Island

Experience a taste of the North Island's best on this journey from Auckland to Wellington. Discover the stunning Coromandel Peninsula, Rotorua's vibrant culture and adventure, Napier's unique Art Deco charm, Hawke's Bay's renowned wine regions, and the cosmopolitan capital city of Wellington – a true showcase of New Zealand's diversity.

Starts in: Auckland
Finishes in: Wellington
Length: 10days / 9nights
Accommodation: Motels
Can be customised: Yes

This itinerary can be customised to suit you perfectly. We can add more days, remove days, change accommodations, mix it up, add activities to suit your interests or simply design and create something from scratch. Call us today to get your custom New Zealand itinerary underway.



Inclusions:

Includes: Late model rental cars

Includes: Unlimited kms

Included activity: Private Transfer Auckland Airport to your Auckland Accommodation with Tourcorp

Included activity: Auckland Sky Tower Admission

Included activity: Cathedral Cove Scenic Cruise

Included activity: Wai-O-Tapu Thermal Wonderland

Included activity: National Kiwi Hatchery Experience
: 1 dinner

Includes: Fully inclusive rental car insurance (excess may apply)

Includes: Afterhours emergency support while touring

Included activity: Electronic Travel Guide and In-Country Support App

Included activity: The Visitor Promise - Cultural Learning Course

Included activity: Hobbiton Movie Set Tour from Shires Rest

Included activity: Te Pā Tū Evening Māori Cultural Experience - Dinner Included

Included activity: Wellington Cable Car

Day 1



Private Transfer Auckland Airport to your Auckland Accommodation with Tourcorp

You will be met at the Auckland airport by the driver and transferred to your Auckland accommodation.

Welcome to Auckland

Welcome to Auckland, known in Māori as Tāmaki Makaurau. Auckland is New Zealand's vibrant "City of Sails," and the country's largest metropolitan area. Nestled between the Pacific Ocean and the Tasman Sea. Surrounded by native bush, lush rainforests, and pristine beaches, Auckland is a haven for both adventurers and urban explorers. Wander through world-class museums and galleries in the city centre or enjoy a peaceful retreat at the Auckland Gardens, where stunning landscapes showcase New Zealand's diverse flora. Stroll along the lively waterfront to savour fresh seafood and international cuisine at Viaduct restaurants. For an unforgettable perspective, ascend the iconic SkyTower, New Zealand's tallest structure, and take in panoramic views of the city and its picturesque islands.

Auckland Sky Tower Admission

Standing at 328 meters (just over 1000 feet) - the Sky Tower is the tallest man-made structure in New Zealand and offers panoramic views of the Auckland landscape. Travel in the glass-fronted lift to one of three spectacular viewing platforms, or for a little more excitement do a SkyWalk - an outside loop around the pergola 192 meters (just over 600 feet) above ground. If you're really bold, Take the quick way down and SkyJump off the tower - a controlled free fall to the base.

Inside, the Sky Lounge offers coffee and light meals while the iconic Orbit Restaurant is Auckland's only 360-degree revolving dining experience.

Your accommodation: Oaks Auckland Hotel

Oaks Auckland Hotel offers a comfortable self-contained apartment in downtown Auckland. Located a short walk from Britomart Transport and the Viaduct. Enjoy you stay in central Auckland surround by delicious eateries or use your in-house kitchenette to dine in!



Day 2



SUGGESTED ACTIVITY - All Blacks Experience

See what it takes to make, shape and be an All Black. Experience first-hand the excitement and emotion of game day. Discover the stories behind some of world rugby's most famous players, moments, and matches.

This guided experience introduces you to the game of rugby including state-of-the-art displays combining sound, images, interactive technology, and hands-on activities. Discover New Zealand's deep passion for our national sport, experience the full force of the All Blacks haka, and tackle interactive zones where you can try out your kicking, catching, line-out, and accuracy skills against legendary All Blacks.

SUGGESTED ACTIVITY - Wētā Workshop Unleashed

A jaw-dropping, senses-shattering, awe-inspiring adventure into the heart of movie magic! Get hands-on and immerse yourself in an extraordinary world of practical effects, props and larger-than-life sets. On this award-winning tour, you can explore three movie projects imagined by the Weta crew and uncover how they bring big screen concepts to life. Discover a mind-blowing world of robots, monsters, dinosaurs and more - step right into the action to see, play and experience movie-making up close.

Collect Rental Car

This tour's from price includes an intermediate-sized vehicle, setting you up for comfortable travels. Yet, we understand every adventure is unique! Feel free to select the perfect wheels from our incredible collection of rental cars, spanning from economy hatchbacks to premium SUVs.

Auckland to Whitianga via Coromandel Township

As you leave the Auckland boundary the landscape changes to lush farmland. You'll cross the fertile Hauraki Plains - one of New Zealand's largest dairy producing regions. Pass the Thames Estuary, a haven for wildlife and shore birds. Take a short detour to nearby Miranda (well sign posted) to see the large flocks of godwits and oystercatchers. Arriving into the old gold mining town of Thames, there are two different routes to the east coast of the Coromandel. Directly over the Coromandel Ranges will deliver you to the coast in a snappy 45 minutes or if you're after more leisurely route, head North to the Coromandel Township along the Pōhutukawa Coast (part of the Pacific Coast Highway). This is one of the most spectacular drives in the region and not to be missed. Continue down the coast to arrive in the picturesque town of Whitianga.

Your accommodation: Sovereign Pier On The Waterways

Sovereign Pier on the waterways provides 5 Star holiday water front accommodation in an exciting location. A reflection of good taste and quality to provide value in holiday choices for all. Enjoy a private balcony with stunning views and access to a private marina and a swimming pool with hot tub.



Day 3



Explore Whitianga

Whitianga is located at Mercury Bay on the eastern coast of the Coromandel peninsula, a 3-hour drive from Auckland and 1 and a half hours from Thames. Captain Cook arrived there in 1769 to observe the transit of Mercury, and hence the bay was named. This small bustling town once played a major part in the kauri logging industry, with over 150 million metres of timber being exported between 1830 and the end of the century. The Whitianga museum, housed in the old dairy factory, displays an interesting collection designed to relay engrossing tales of the time.

Today, the town has many cafes and craft shops, with its income derived mainly from tourists. The summer months bring visitors to enjoy fishing, surfcasting, and swimming along the palm-fringed beaches. But the largest attraction is probably the big game marlin fishing, with many charters available to hunt in the rich waters of the Pacific Ocean.

On the other side of the harbour is Australasia's oldest stone wharf, from where a passenger ferry takes visitors to the delightful Cooks Beach, just a 5-minute walk along the road. Nearby is Buffalo Beach, named after H.M.S. Buffalo, a ship taking convicts and settlers to South Australia that blew aground in 1840. As well as Opito Bay, Flaxmill Bay, and Kuaotuna Beach, to name but a few of the many locations easily visited from Whitianga, the region is well worth a visit.

Coves, Caves and Coastline Cruise from Whitianga

Explore the volcanic coastline with its many caves, blowholes and golden beaches all from the comfort and safety of an ex coastguard 28 ft cruiser. Departing from Whitianga Wharf journey past the towering Shakespeare's Cliffs and historic Cooks Beach. Visit Cathedral Cove and the islands in the marine reserve. There is also a chance to swim with the abundant fish in the reserve (on board snorkel gear provided - don't forget your swimsuit and towel). For those who prefer to stay dry an underwater camera relays images to an onboard TV.

The Lost Spring - suggested activity

Experience luxury and relaxation in Whitianga's beautifully hand-sculpted pools filled with natural thermal spring waters and surrounded by luscious native bush. The Lost Spring therapeutic thermal pools offer a range in temperatures and depths to suit everyone. Sit back and relax in the natural spring mineral waters ranging from a cool 32 degrees to a warm 38 degrees. The Lost Springs Crater Lake Hot Pool is the warmest pool, with temperatures maintained at a toasty 40 degrees. You can enjoy a truly New Zealand thermal experience. With running waterfalls from pool to pool, you can settle back and listen to the sounds of nature entwined with soothing Pacifica music. Whilst you soak, you can enjoy delicious cocktails and platters from the poolside menu, served to you by your friendly TLS Café staff.

If you feel like more pampering, there is also a day spa on site with tailored treatments to suit individual needs. The team of professional therapists has blended years of experience, mixing Eastern traditions with modern Western therapies and a sprinkle of Pacifica charm to create a boutique spa menu just for you.

Your accommodation: Sovereign Pier On The Waterways

Sovereign Pier on the waterways provides 5 Star holiday water front accommodation in an exciting location. A reflection of good taste and quality to provide value in holiday choices for all. Enjoy a private balcony with stunning views and access to a private marina and a swimming pool with hot tub.



Day 4



Whitianga to Matamata

Head south along the Peninsula, passing the idyllic seaside communities of Hahei, Hotwater Beach and Tairua before turning inland. Continuing south you'll pass through Paeroa, the home of New Zealand's iconic soft drink L&P, keep an eye out for the giant bottle. Next is the beautiful Edwardian spa town of Te Aroha "The Mountain of Love" is famous for sparkling hot mineral spas and the world's only hot soda water geyser. Once you reach Matamata you are in hobbit country and the route takes you to the town of Matamata where you can visit the film locations made famous in the Lord of the Rings and Hobbit movies at Hobbiton Movie Set and Farm Tours.

Hobbiton Movie Set Tour from Shires Rest

In the heart of New Zealand, you can step into the lush pastures of the Shire with a guided tour of Hobbiton, as featured in The Lord of the Rings and The Hobbit Trilogies. Hobbiton is located just outside of Matamata in the heart of the lush Waikato farming region. Here you can visit such iconic Hobbit locations as Hobbit Holes, the Green Dragon Inn, the Mill and the Party Tree with a guide sharing behind-the-scenes tales and insight into the making of the films. Spend time wandering through Bagshot Row before being led inside a Hobbit Hole to view the detailed interior, designed to provide an authentic glimpse into the dwelling of a Hobbit.

Matamata to Rotorua

Just south of Matamata is the township of Tirau, home to the largest tin sheep and sheepdog, but it also offers a surprising number of bric-a-brac, art, craft, and antique stores if you feel like browsing.

Arriving into the City of Rotorua the region's geothermal activity becomes evident as you see steam rising from the roadside and surrounding hills.

Considered the cultural center for the Maori people, Rotorua is the ideal place to gain an insight into the history and culture. Nearby Ohinemutu Village is the original site of the first Maori settlers in the area and despite its modern surroundings and buildings, you can still gain a sense of what the original village was like. The magnificent meeting house and historic carvings along with the unique 'Tudor-style' St Faiths Church feature in many visitors' photo albums.

One of the most popular introductions to the Maori Culture is through an evening at Mitai Maori Village where you can enjoy performances and demonstrations followed by a traditionally cooked hangi meal.

Of course, Rotorua is also a great place to enjoy many other activities including, fishing, 4WD trips, relaxing spa treatments, mountain biking, walking, and hiking plus helicopter and float plane trips.

Your accommodation: Silver Fern Suites & Spa

Silver Fern Suites & Spa is located just minutes from Rotorua's city centre and is close to popular thermal attractions, cafes, restaurants and golf courses. Suites have a private spa pool or double spa bath for you to unwind and relax.



Day 5



Explore Rotorua

Peppered with natural hot springs, boiling mud pools and steaming geysers, Rotorua sits within one of the world's most active volcanic regions. Geothermal landmarks aside, this city of sulphur has a rich indigenous history. Home to several prominent Māori tribes, a visit to one of the Māori experiences should be high on your agenda, learn about the special meaning of pounamu-Greenstone with Mountain Jade, explore the geysers and arts of Te Puia or immerse in an evening with Te Pā Tū. An excursion to one of the area's wellness spas is also a must! Try the Polynesian Spa for an invigorating soak in its natural mineral hot springs, Wai Ariki offers an indulging and unwinding restorative journey or pay a quick visit to Secret Spot for a soak and a delicious smash burger! If it is a thrill you are looking for, spike your adrenaline at Rotorua Canopy Tours, soaring above the ancient native forest below. Alternatively, head up the Skyline Rotorua Gondola for soaring lake views, and ride the luge at night for an extra thrill. Make the most of your time in Rotorua with an excursion through the Wai-O-Tapu Thermal Wonderland, one of the area's most colourful volcanic attractions. Whatever you are after, Rotorua is almost certain to have it!

SUGGESTED ACTIVITY - Original Ziplining Experience with Rotorua Canopy Tours

Embark on a three-hour adventure through the native New Zealand forest. Journey through the beautiful forest canopy via an incredible network of trails, tree platforms, Ziplines and swing bridges. See breathtaking views of the woodland valleys and hills as you fly through tight openings in the trees. In between the thrill of the ziplines and suspended tree bridges, your guides will share their passion and knowledge for the forest and the conservation challenges to preserve it. It is important you read and understand the risks associated with this activity. For more information see [here](#).

Wai-O-Tapu Thermal Wonderland

Wai-O-Tapu Thermal Wonderland is a spectacular showcase of New Zealand's colourful and unique geothermal elements sculpted by thousands of years of volcanic activity. You will be introduced to a diversely different natural landscape, extending over 18-sq. km. Enjoy viewing the volcanic features as you walk at your own pace along well-defined tracks. Relax in the first-class Visitor Centre, home to the Gift Shop and Caf  facilities. Visit the Mud Pool, the largest in New Zealand, it was originally the site of a large mud volcano which was destroyed through erosion in the 1920s. See the history and beauty of the Lady Knox Geyser at 10:15 am every day where a daily eruption happens of up to 20 metres.

Te P  T  Evening M ori Cultural Experience - Dinner Included

New Zealand's Most Awarded Cultural Attraction, presenting Te P  T . Feast on song, drama, tradition, and divine seasonal kai (cuisine) within the forest P  (village) blanketed by towering Tawa trees, blazing bonfires, and a forest-formed amphitheatre. Te P  T  shares M ori history, traditions, and cultural aspirations across 4-hours of celebration and feasting. These events change with each season of the Maramataka, the M ori lunar calendar.

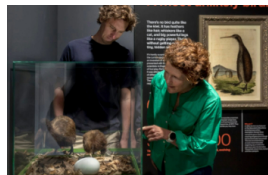
Your accommodation: Silver Fern Suites & Spa

Silver Fern Suites & Spa is located just minutes from Rotorua's city centre and is close to popular thermal attractions, cafes, restaurants and golf courses. Suites have a private spa pool or double spa bath for you to unwind and relax.

Meals included: Dinner



Day 6



National Kiwi Hatchery Experience

The National Kiwi Hatchery Experience is a special opportunity to gain insight into and view this highly regarded conservation centre. Developed with the visitor experience in mind, the hatchery boasts special viewing opportunities and is hosted by kiwi expert guides who ensure guests leave fully informed and all questions answered. Learn all about New Zealand's intriguing national icon and the efforts of the kiwi husbandry team, see and discover what it takes to hatch and rare chicks, and if you're lucky see baby chicks in person!

Rotorua to Napier

This drive will take you through the thermal region just south of Rotorua. Home to a plethora of unique geothermal attractions including boiling mud pits, natural hot springs and steaming geysers, this area is a must do before you move on to Napier. Notable attractions are Wai-O-Tapu, Waimangu and Craters of the Moon. Continue on to Taup  and marvel at the lake, a giant crater formed following a volcanic eruption in the year 180 CE. As you approach the town, be sure to stop at Huka Falls to view the spectacular sight of hundreds of cubic metres of water spilling every second down the narrow 11 metre drop. For an extra thrill take a jet-boat ride at the base of the falls. Leaving Taup , follow the road as it climbs the rugged Ahimanawa Range before descending back down the Pacific Coast to art deco coastal township of Napier.

Napier City

Napier, a coastal gem, is famed for its 1930s Art Deco architecture, the annual Art Deco Weekend, stately Norfolk pines, nearby wineries, and fresh local produce. With a Mediterranean climate and over 2,200 hours of sunshine annually, it boasts a thriving caf  culture set against stunning heritage buildings. The city center has around 30 caf s within walking distance, while Ahuriri, just beyond Bluff Hill, offers more upscale dining. Marine Parade overlooks the Pacific Ocean and Cape Kidnappers, home to the world's largest mainland gannet colony. Visitors can explore Ocean Spa, the Hawke's Bay Museum, and the National Aquarium of New Zealand. Bluff Hill, a key landmark, provides sweeping views of Napier, Perfume Point, Westshore Beach, and the busy Port of Napier, which exports timber, fruit, and meat worldwide.

In 1931, Napier was devastated by a 7.8-magnitude earthquake, New Zealand's worst natural disaster. Fires ravaged the city. Rebuilding efforts transformed Napier and Hastings into modern cities, while the uplifted Ahuriri Lagoon created much-needed land for expansion.

Your accommodation: Bella Vista Napier

Bella Vista Motel Napier invites you to experience its friendly service and modern motel units. Located close to shops, restaurants and the renowned Marine Parade with its majestic Norfolk pines.



Day 7



Explore Hawkes Bay

Discover Hawke's Bay, known in Māori as Te Matau-a-Māui or the fish hook of Māui. This is a region renowned for its Mediterranean charm, iconic Art Deco architecture, and award-winning wineries. Explore Mission Estate, the birthplace of New Zealand wine, or tour vineyards for a deeper dive into its winemaking legacy. Fans of the 1930s can enjoy a Vintage Car Tour, showcasing Napier's architectural gems. Outdoor enthusiasts can cycle over 200km of scenic trails or unwind at pristine beaches like Ocean and Waimarama. Indulge your taste buds with local delights, from honey and chocolate to fresh orchard produce. The Hawkes Bay is also home to an abundance of wildlife, head out on a Gannet Safari or educate yourself at the National Aquarium of New Zealand.

SUGGESTED ACTIVITY - Gannet Safaris

Drive along the scenic coast from Napier to Te Awanga and join Gannet Safaris Overland and the world's largest, most accessible gannet colony at Cape Kidnappers. Gannet Safaris has been guiding visitors over Cape Kidnappers for over 35 years and their safaris are the only way to be driven right to within a few feet of these remarkable birds. You will travel in comfort in air-conditioned 4 x 4 wheeled vehicles, through Cape Kidnappers Station - traversing riverbeds, broad rolling pastures, stands of native bush, steep gullies and breath-taking inclines. There is a stop on the way at a spectacular cliff top with panoramic views of Hawke Bay right across to Mahia peninsular. The 36km, three hour trip includes a commentary by your tour guide/driver on the farming operation on Cape Kidnappers Station and an introduction to the gannets. On arrival at the gannets you can stretch your legs and take in the scenery from your position at the brink of the cliff's edge, 100 metres above the ocean!

SUGGESTED ACTIVITY - Hawkes Bay Half Day Wine Tour with Grape Escape

This wine tasting tour is designed for casual imbibers and wine aficionados. Meet like-minded people and share an appreciation of Hawke's Bay's fantastic wines. Taste great wines made with passion and learn of the area's unique growing conditions. Take home outstanding wines and wonderful memories. Join a fun filled wine tasting afternoon in the sun driving through absolutely stunning scenery. Meet like-minded people and share an appreciation of this region's fantastic wine. Visit four to five wineries and enjoy a cheese platter on the grounds of the Ngatarawa Vineyard beside the lily pond.

Your accommodation: Bella Vista Napier

Bella Vista Motel Napier invites you to experience its friendly service and modern motel units. Located close to shops, restaurants and the renowned Marine Parade with its majestic Norfolk pines.



Day 8



Napier to Martinborough

As you leave the rolling countryside of the Hawke's Bay you'll be greeted with some of the country's richest dairy farmland in the Manawatu Gorge. Continue on through the Wairarapa region and stop in the Pukaha Mount Bruce Wildlife Centre, where you can see some of New Zealand native animals. Take another break in Masterson, and visit the interactive Woolshed Museum to learn about sheep farming in New Zealand. As you drive south, a visit to historic Greytown is a must-do. Take in the restored Victorian buildings and make time for a cup of tea at one of its quaint cafes. Leaving state highway 2 you will cross over the Ruamahanga River into Martinborough wine country your destination for the day.

SUGGESTED ACTIVITY - Martinborough Half Day Wine Tour with Martinborough Wine Tours

Visit wonderful vineyards such as Te Kairangi Wines, Tirohana Estate, Cabbage Tree Vineyard and Martinborough Vineyard on this half day tour of the premium wine region of Martinborough. Taste the wines, learn about the development of the region, its people and characters from knowledgeable guides.

Your accommodation: The Claremont, Martinborough

Set just outside the main village, The Claremont is the ideal base for you to enjoy everything the region has to offer. Well-appointed, self-contained apartments and units will make your stay very comfortable.



Day 9



Martinborough to Wellington City

Cross the Remutaka Ranges as you make your way to New Zealand's capital city, Wellington. Often compared to Melbourne, Wellington is vibrant cultural hub. Home to the nation's centre of government. Legislation happens in the aptly named 'Beehive', an executive wing attached to the Houses of Parliament. At 1km squared, the city centre (easily traversed on foot) has an international feel and is peppered with underground art shows, alleyway cafes and New York style delis. Take in the boardwalk view as you stroll to Te Papa Museum or indulge your cinematic side exploring Weta Workshop, the Oscar Award winning design studio for Lord Of The Rings. For a taste of vintage fashion, spend some time (and dollars!) on Cuba Street browsing the boutiques. Work off last night's dinner with a cycling tour of Oriental Bay and undo your good work with a Hokey Pokey ice-cream in the sun. For those heading further down, the capital is where you board the ferry crossing the Cook Strait to the South Island.

Wellington Cable Car

Take a ride on the historic Wellington Cable Car and enjoy stunning views of the city and harbour, Te Whanganui-a-Tara, as you ascend Kelburn Hill in just five minutes. At the top, visit the Cable Car Museum to see the original machinery and watch a short film about its history, or browse the gift shop. Just a short walk away, Space Place at Carter Observatory offers interactive exhibits and a digital planetarium exploring the Southern skies. If you have time, stroll back down through the scenic Wellington Botanic Garden.

Explore Wellington museums

Discover Wellington's vibrant museum scene, where history, art, and culture collide. Te Papa Tongarewa, New Zealand's national museum, offers immersive exhibits exploring the nation's art, culture, and natural history. The Wellington Museum shares the fascinating stories of the Wellington region. For art lovers, City Gallery Wellington showcases cutting-edge contemporary works from local and international artists. Perfect for all ages, Wellington's museums blend education and inspiration, making them a must-visit in the capital.

SUGGESTED ACTIVITY - Zealandia By Night Wildlife Sanctuary Tour

Taking a night tour of Zealandia wildlife eco-sanctuary is an unforgettable experience and one that comes highly recommended. A conservation success and safe haven for some of New Zealand's rarest native animals, Zealandia is home to many remarkable species of birds, reptiles and insects living wild within a beautiful 225 hectare (one square mile) valley, just 10 minutes from the central city.

Your accommodation: Adina CityLife Wellington [Formerly Heritage CityLife Wellington]

Adina CityLife Wellington is a suite style hotel with every amenity required for a comfortable stay, as well as being in a superb location to explore the compact city centre. Situated on Lambton Quay, you'll find the best shopping, tourist attractions and cultural landmarks all within easy walking distance.



Day 10



Return your vehicle to Wellington Airport

Explore more of Wellington before dropping your rental car at the airport depot and continuing your onward journey.

Farewell from Aotearoa-New Zealand

Bid farewell to Aotearoa-New Zealand, taking with you unforgettable memories of its breathtaking landscapes and incredible adventures. In Maori, it is said mā te wā, which is not goodbye, it is see you soon!

Tour details

Departures:	Daily
Tour type:	North Island Self Drive
Starts:	Auckland
Finishes:	Wellington
Tour length:	10
Accommodation:	Motels
Car/transport type:	

Included activities

Includes	Private airport transfers
----------	---------------------------

Accommodation summary

Day 1	Oaks Auckland Hotel
Day 2	Sovereign Pier On The Waterways
Day 3	Sovereign Pier On The Waterways
Day 4	Silver Fern Suites & Spa
Day 5	Silver Fern Suites & Spa
Day 6	Bella Vista Napier
Day 7	Bella Vista Napier
Day 8	The Claremont, Martinborough
Day 9	Adina CityLife Wellington [Formerly Heritage CityLife Wellington]