



## 21 Day Classic New Zealand

Explore the cities and scenery of both the North and South Islands on this 21 day Classic Driving tour. With many two night stays, this New Zealand itinerary lets you discover the hidden gems and iconic attractions of every destination. We've also included the Milford Sound Nature Cruise -- an unmissable attraction. After your day's exploring you'll retreat to charming boutique lodges and hotels, where you're received with a warm welcome by your hosts. This really is fine touring!



Starts in: Auckland  
Finishes in: Christchurch  
Length: 21days / 20nights  
Accommodation: Boutique Lodges & Hotels  
Can be customised: Yes



This itinerary can be customised to suit you perfectly. We can add more days, remove days, change accommodations, mix it up, add activities to suit your interests or simply design and create something from scratch. Call us today to get your custom New Zealand itinerary underway.



### Inclusions:



Includes: Late model rental cars

Includes: Fully inclusive rental car insurance (excess may apply)

Includes: Unlimited kms

Includes: GPS navigation

Includes: Airport & ferry terminal rental car fees

Includes: Additional drivers

Includes: Comprehensive tour pack (detailed itinerary, driving instructions, map/guidebooks, brochures)

Includes: 24/7 support while touring New Zealand

Included activity: Private Transfer Auckland Airport to your Auckland Accommodation with Tourcorp

Included activity: Electronic Travel Guide and In-Country Support App

Included activity: Dinner at Camp Estate, Larnach Castle

Included activity: Dinner at Camp Estate, Larnach Castle

Included activity: Milford Sound Cruise with Real NZ - Lunch Included

Included activity: TranzAlpine Scenic Train: Greymouth to Christchurch

Included activity: Shared Transfer from Christchurch Train Station to Christchurch CBD Accommodation with Christchurch Touring Company

Included activity: Private Transfer from Christchurch Accommodation to Christchurch Airport with Christchurch Touring Company

Included activity: Interislander Ferry Wellington to Picton

: 20 breakfasts, 1 lunch, 1 dinner, 2 special dinners



## Day 1



### Private Transfer Auckland Airport to your Auckland Accommodation with Tourcorp

You will be met at the Auckland airport by the driver and transferred to your Auckland accommodation.

---

### Welcome to Auckland

Kia ora! Welcome to Auckland, known in Māori as Tāmaki Makaurau. Auckland is New Zealand's vibrant "City of Sails," and the country's largest metropolitan area. Nestled between the Pacific Ocean and the Tasman Sea, it offers something for everyone. Surrounded by native bush, lush rainforests, and pristine beaches, Auckland is a haven for both adventurers and urban explorers. Wander through world-class museums and galleries in the city centre or enjoy a peaceful retreat at the Auckland Gardens, where stunning landscapes showcase New Zealand's diverse flora. Stroll along the lively waterfront to savour fresh seafood and international cuisine at the Viaduct restaurants. For an unforgettable perspective, ascend the iconic SkyTower, New Zealand's tallest structure, and take in panoramic views of the city and its picturesque islands.

---

### Your accommodation: Fable Auckland

Located right on Queen Street the Fable Auckland is boutique and stylish property with an ideal location to enjoy and explore the vibrant heart of the 'City of Sails'.



## Day 2



### Collect Rental Car

Choose a car to best suit your needs from our fantastic rental car range. From compact economy, hatchbacks to prestige SUVs.&nbsp;

---

### Explore more Auckland

Auckland straddles two natural harbours and is surrounded by a large area of natural wilderness. With a thriving urban culture, this cosmopolitan city has an endless amount of activities both in and outdoors. Even after yesterday's exploration there are many more things to do while you're here. Today go a little further afield to the rainforest and beaches of the Waitakere Ranges. Visit the vast black beach, Te Henga-Bethells, or iconic surf location Piha. Choose one of the many scenic walks in the area and see regenerating forest, mature kauri, waterfalls, rocky shores and black volcanic sand. Muriwai Beach is another popular West Coast destination and it is here at the Takapu Refuge you can see one of the world's only mainland breeding colonies of the Australasian Gannet. West Auckland is also home to some of New Zealand's oldest wineries around the Kumeu and Waimauku regions. And if gourmet food and wine is more your thing, then Waiheke Island, home to spectacular beaches and boutique vineyards is a must do.

---

### SUGGESTED ACTIVITY - All Blacks Experience

See what it takes to make, shape and be an All Black. Experience first-hand the excitement and emotion of game day. Discover the stories behind some of world rugby's most famous players, moments, and matches.

This guided experience introduces you to the game of rugby including state-of-the-art displays combining sound, images, interactive technology, and hands-on activities. Discover New Zealand's deep passion for our national sport, experience the full force of the All Blacks haka, and tackle interactive zones where you can try out your kicking, catching, line-out, and accuracy skills against legendary All Blacks.

---

### SUGGESTED ACTIVITY - Wētā Workshop Unleashed

Explore worlds of horror, sci-fi and fantasy in the making. An exciting, realistic, and authentic experience, with three fully developed and original film concepts: A nail-biting horror Fauna, a fantasy epic Age of the Ever-Clan, and the mind-bending sci-fi Origins.

A 90-minute guided experience through fully themed environments, including immersive horror, fantasy, and sci-fi story worlds. Be immersed by a specially-created unique sweeping cinematic soundtrack, animatronic creatures, physical and digital interactives, hyper-realistic sculpted giants and characters, a horror house experience, and much more.

---



### Your accommodation: Fable Auckland

Located right on Queen Street the Fable Auckland is boutique and stylish property with an ideal location to enjoy and explore the vibrant heart of the 'City of Sails'.

Meals included: Breakfast



---

### Day 3



#### Auckland to Rotorua

The drive south from Auckland takes you past the the Bombay Hills which mark the outer boundary of greater Auckland area and it's here you turn inland to central Waikato. You'll soon go through the town of Matamata where you can visit the fully intact Hobbiton film set used in the shooting of the Lord of The Rings and Hobbit trilogies. Continuing on, you'll pass several small farming communities before telltale signs of steam and other geothermal activity signal your arrival into Rotorua.

---

### Your accommodation: On the Point

On the Point is a beautiful lodge accommodation in a stunning location and offering panoramic views. It also offers gourmet New Zealand food and wine, as well as a range of on site activities from pampering massage, fly fishing from the private beach, water sports, tennis, gym and boating and is only 10 minutes from the heart of Rotorua.

Meals included: Breakfast



---

### Day 4



#### Explore Rotorua

Peppered with natural hot springs, boiling mud pools and steaming geysers, Rotorua sits within one of the world's most active volcanic regions. Geothermal landmarks aside, this city of sulphur has a rich indigenous history. Home to several prominent Māori tribes, a visit to one of the Māori experiences should be high on your agenda, learn about the special meaning of pounamu-Greenstone with Mountain Jade, explore the geysers and arts of Te Puia or immerse in an evening with Te Pā Tū. An excursion to one of the area's wellness spas is also a must! Try the Polynesian Spa for an invigorating soak in its natural mineral hot springs, Wai Ariki offers an indulging and unwinding restorative journey or pay a quick visit to Secret Spot for a soak and a delicious smash burger!

If it is a thrill you are looking for, spike your adrenaline at Rotorua Canopy Tours, soaring above the ancient native forest below. Alternatively, head up the Skyline Rotorua Gondola for soaring lake views, and ride the luge at night for an extra thrill.

Make the most of your time in Rotorua with an excursion through the Wai-O-Tapu Thermal Wonderland, one of the area's most colourful volcanic attractions. Whatever you are after, Rotorua is almost certain to have it!

---

### Your accommodation: On the Point

On the Point is a beautiful lodge accommodation in a stunning location and offering panoramic views. It also offers gourmet New Zealand food and wine, as well as a range of on site activities from pampering massage, fly fishing from the private beach, water sports, tennis, gym and boating and is only 10 minutes from the heart of Rotorua.

Meals included: Breakfast



## Day 5



### Rotorua to Napier

This drive will take you through the thermal region just south of Rotorua. Home to a plethora of unique geothermal attractions including boiling mud pits, natural hot springs and steaming geysers, this area is a must do before you move on to Napier. Notable attractions are Wai-O-Tapu, Waimangu and Craters of the Moon.

Continue on to Taupō and marvel at the lake, a giant crater formed following a volcanic eruption in the year 180 CE. As you approach the town, be sure to stop at Huka Falls to view the spectacular sight of hundreds of cubic metres of water spilling every second down the narrow 11 metre drop. For an extra thrill take a jet-boat ride at the base of the falls. Leaving Taupō, follow the road as it climbs the rugged Ahimanawa Range before descending back down the Pacific Coast to art deco coastal township of Napier.

### Your accommodation: McHardy Lodge

This beautifully restored, single-storey 1890's residence is nestled in a quiet cul de sac on Napier Hill, a great location from which to explore the Art Deco city. Experience a boutique Bed & Breakfast with unparalleled facilities and historic character rooms.

Meals included: Breakfast



## Day 6



### Napier to Wellington City via Masterton

The rolling countryside of the Hawke's Bay leads you into some of New Zealand's richest farmland, located around the Manawatu region. Passing along the Manawatu Gorge the Wairarapa welcomes you. Masterton is home to the golden shears sheep shearing competition while just further south Greytown boasts the largest concentration of historic wooden buildings in the country.

Nearby Martinborough is home to dozens of boutique wineries. The route takes you over the Remutaka Range and along the magnificent natural harbour that the capital city of Wellington sits upon.

### Your accommodation: Bolton Hotel Wellington

The Bolton Hotel offers contemporary apartment-style accommodation in the heart of Wellington. Just steps from the Parliament buildings and central business district, Bolton Hotel is conveniently close to the best of the city's shops, cafes and restaurants and is within walking distance of Wellington's vibrant waterfront.

Meals included: Breakfast



## Day 7





## Interislander Ferry Wellington to Picton

The 92 km journey between Wellington and Picton takes around 3 hours and has been described as 'one of the most beautiful ferry rides in the world'. Leaving Wellington Harbour the ferry passes many interesting points such as Pencarrow Head on top of which is New Zealand's oldest lighthouse (1859). Red Rocks is home to a seal colony and Oterangi Bay is the site which recorded the country's highest ever wind speed of 268 kph (167 mph).

From the Cook Strait spectacular views of the Kaikōura Ranges on the South Island can be enjoyed and dolphins and many sea birds are often seen. Around one hour of the cruise takes you through the Marlborough Sounds and this region of bush covered mountains, small islands, crystal clear waters and secluded bays offer remarkable photographic opportunities. The final leg of the cruise travels through Queen Charlotte Sound before coming to an end in the picturesque town of Picton.

---

### SUGGESTED ACTIVITY - Premium Lounge with Interislander

Escape to Interislander's Premium Lounge for sensational views, child-free serenity, and locally sourced food and drink. Interislander's Premium Lounge has enhanced its offering to bring you an elevated travel experience across Cook Strait. Enjoy delicious food and drink, attentive service, and prime positions for appreciating the spectacular views. Whether you're looking to relax or chat with your travel companions, the Premium Lounge provides the ideal space. With varied seating options, you can choose a cosy spot to watch the stunning scenery and taste a selection of seasonal snacks included in your ticket.

---

### Collect Rental Car

Choose a car to best suit your needs from our fantastic rental car range. From compact economy, hatchbacks to prestige SUVs.

---

### Your accommodation: Sennen House, Picton

This magnificent 2-storey villa is one of Picton's original colonial homesteads. Extensively restored, Sennen House offers guests a truly unique accommodation experience, set in 5 acres of National Trust protected native forest and grounds, yet only a short stroll to Picton's restaurants, shops, ferries and foreshore.

Meals included: Breakfast



---

## Day 8



### Picton to Kaikoura

From Picton head south on State Highway One towards Blenheim, and the wine-producing region of Marlborough. Ideally located to enjoy an afternoon sampling the local produce, stop for a guided wine tour with Full Day Marlborough Wine Tour. Crossing the dry hills of the Marlborough ranges you head towards one of the most spectacular coastlines of the South Island, the Kaikoura Coast. The road hugs the shore for around 50 kilometres and offers many chances to view the native wildlife such as seabirds and New Zealand fur seals. To the east is the Pacific Ocean and to the west you'll follow alongside the Kaikoura Ranges before arriving into the bustling Kaikoura Township.

---

### Kaikōura

Kaikōura is a breathtaking seaside town teeming with marine life and natural beauty. As you wander through this coastal paradise, you'll be enveloped by the fresh sea breeze and the sounds of the ocean. Begin your adventure by observing the lively fur seal colony at the tip of the peninsula. For an unforgettable experience, board a boat to go whale watching and marvel at the majestic whales that call these waters home year-round. If you're feeling adventurous, take the plunge and swim with the playful dusky dolphins in their natural habitat. For bird enthusiasts, Kaikōura offers the chance to get up close with the native albatross, an awe-inspiring sight. The town is rich with attractions, walking tracks, and activities for every visitor. A walk around the Kaikōura Peninsula is a must, where you can explore tide pools teeming with marine life, observe sea creatures basking on the rocks, and watch seabirds soaring above. Be sure to keep a respectful distance from the sleeping sea lions you might encounter along the way. Ohau Point is another highlight, where you can watch fur seals frolic in their natural environment. To delve into Kaikōura's fascinating history, visit Fyffe House. This historic whaler's cottage offers a glimpse into the town's whaling past and its evolution over the years. No trip to Kaikōura is complete without sampling the local seafood. Renowned for having some of the best fish and chips in the country, Kaikōura's eateries serve fresh catches straight from the morning's haul, ensuring a delicious and authentic dining experience. If you need a break from the action, unwind at Lavendyl Lavender Farm. Stroll through the fragrant lavender fields, relax in the serene atmosphere, and browse the gift shop for a variety of lavender products. Kaikōura seamlessly blends adventure, history, and relaxation, making it a perfect destination for travellers seeking a unique and enriching experience.

---

### SUGGESTED ACTIVITY - Seafood Odyssey Cruise with Marlborough Tour Company

Enjoy the sights and sounds of the Queen Charlotte Sound with seemingly endless bays and coves to explore and different scenery around each corner. Seafood Odyssey Cruise offers a unique range of sightseeing, birdlife and wildlife. Learn about the Marlborough Sounds area, the local seafoods grown and enjoy a fabulous seafood tasting on board matched to stunning Marlborough Sauvignon Blanc.

## Your accommodation: Bendamere House B&B

Bendamere House B&B has quality ensuite rooms, detached from the main house adding to the privacy and comfort, with superb views overlooking the Pacific Ocean and Seaward Kaikoura mountain range.

Meals included: Breakfast



## Day 9



### SUGGESTED ACTIVITY - Ocean's Cabin with Whale Watch Kaikōura

Experience New Zealand's only marine-based whale-watching company. Whale Watch Kaikōura offers a once-in-a-lifetime, up-close encounter with the giant Sperm Whale. You are also likely to encounter New Zealand fur seals, dolphins, and albatross. Depending on the season you may also see Pilot, Blue, and Southern Right whales as well as migrating humpbacks. Often orcas can be spotted here and the world's smallest dolphin, the Hector's, occasionally makes an appearance.

## Kaikōura to Christchurch

Travel down the coast before heading inland through the North Canterbury wine region - the Waipara Valley. If you've time on your hands we recommend taking a detour to Hanmer Springs for relaxing dip in its thermal pools. Arriving into Christchurch you'll see a new and improved city, steadily rising from the ruins of the 2011 and 2010 earthquakes.

## Your accommodation: Orari Bed & Breakfast

Orari Bed and Breakfast offers elegant and inviting accommodation in the heart of Christchurch city. This heritage building has all the charm of a grand Victorian home, but with modern comforts providing for an enjoyable stay.

Meals included: Breakfast



## Day 10



### Explore Christchurch

Following earthquakes that razed its centre and much of the outlying suburbs, Ōtautahi-Christchurch is well into a billion-dollar makeover. In the middle of the Canterbury Plains, bordering the Pacific Ocean, New Zealand's newest city is an ideal gateway to exploring the middle of the South. Go punting on the Avon River, take a historic tram ride, catch the gondola to the rim of an extinct volcano or do all three! See the world's only Cardboard Cathedral and for nature enthusiasts - wander the renowned Christchurch Botanic Gardens, or head to Oxford Terrace in the city to find a great spot to eat or drink. Drive an hour in any direction to ski, mountain bike, wine taste, whale-watch, bungee jump or play golf. Take the winding Port Hills road to the French settlement of Akaroa & Banks Peninsula and tour the vines in Waipara for an authentic New Zealand wine-tasting experience.

## Your accommodation: Orari Bed & Breakfast

Orari Bed and Breakfast offers elegant and inviting accommodation in the heart of Christchurch city. This heritage building has all the charm of a grand Victorian home, but with modern comforts providing for an enjoyable stay.

Meals included: Breakfast





## Day 11



### Christchurch to Aoraki-Mt Cook National Park

Drive through the heart of the South Island, crossing the vast Canterbury plains. Catch your breath in Geraldine before continuing through Fairlie. Ascending Burkes pass you'll come to the picturesque town of Lake Tekapo. Follow the road and take in the view of Aoraki-Mt Cook (New Zealand's tallest mountain) from the shores of Lake Pukaki, known for its glacier fed turquoise blue colour. Continue along the lake to your final destination Aoraki-Mt Cook Village.

### Your accommodation: Hermitage Hotel, Aoraki Wing Premium

The Hermitage Hotel ringed by magnificent snow-capped peaks of the Southern Alps, is a world-renowned tourist destination and has been an icon of superior accommodation and dining since 1884.

Meals included: Breakfast, Dinner



## Day 12



### Aoraki Mt Cook National Park to Dunedin

Leave Aoraki Mt Cook National Park and travel past Twizel, one of the locations for the Lord of the Rings films. Go through Omarama, the gliding capital of New Zealand. Continue down the Waitaki Valley follow the hydro power generating system towards the east coast. Stretch your legs in Oamaru, known for its white stone buildings constructed with the local Oamaru Stone and Steampunk influence. If you were a little late off the mark this morning you may get the chance to see the blue penguins come ashore at dusk. Continue south down the coast to Moeraki, and take a detour towards the beach to see the Moeraki Boulders, a unique geological feature well worth a look. As you arrive in Dunedin, take in the city's Edwardian and Scottish heritage reflected in the buildings around the city centre The Octagon.

### Dinner at Camp Estate, Larnach Castle

Keeping with the historical setting of Larnach Castle, a four-course dinner is offered in a grand Castle Dining Room. This is a trust-the-chef experience where you may indulge in incredible meals and meet other guests. The menu reflects local meats and vegetables, served in a traditional New Zealand-style cuisine with the opportunity to pair with regional wines.

### Your accommodation: Camp Estate at Larnach Castle

A luxurious country house built from blue stone and features a spectacular marble staircase. The modern rooms are all double glazed and the reception rooms are all heated by open fires and underfloor heating. Staying at Camp Estate includes entry to Larnach Castle and the grounds.

Meals included: Breakfast, Speciality Dinner



## Day 13



## Explore Dunedin and the Otago Peninsula

Known as the Edinburgh of the South, Dunedin City has a heavy Scottish influence. Surrounded by rugged coastal plains and windswept beaches it's home to an eclectic mix of historical and modern architecture as well as industrial technology. Renowned for its Flemish Baroque-inspired 'gingerbread house' Railway Station, this university town is bustling with life. Head to the Saturday farmers market held in the aforementioned railway grounds for a taste of organic produce, handmade crepes and local honey. Explore the many cafes and wine bars in The Octagon, then continue on a self-guided walking tour of the internationally acclaimed Street Art dotted around the city. Drive to the coast and watch the freighters passing in the distance while you sunbathe, or hire a mountain bike and test your legs on one of the many trails available in the area. For a more immersive historical experience, follow the coast to New Zealand's only castle, Larnach Castle. On your way back be sure to head to the Otago Peninsula to see the largest mainland Albatross colony in the world.

### Dinner at Camp Estate, Larnach Castle

Keeping with the historical setting of Larnach Castle, a four-course dinner is offered in a grand Castle Dining Room. This is a trust-the-chef experience where you may indulge in incredible meals and meet other guests. The menu reflects local meats and vegetables, served in a traditional New Zealand-style cuisine with the opportunity to pair with regional wines.

### Your accommodation: Camp Estate at Larnach Castle

A luxurious country house built from blue stone and features a spectacular marble staircase. The modern rooms are all double glazed and the reception rooms are all heated by open fires and underfloor heating. Staying at Camp Estate includes entry to Larnach Castle and the grounds.

Meals included: Breakfast, Speciality Dinner



## Day 14



### Dunedin to Te Anau (via Invercargill)

The drive to Te Anau takes you through classic Southland farming scenery. Head off-the-beaten-track today and follow the coastline instead of the inland route. Go through The Catlins area and be sure to take a detour to Kaka Point to view its majestic cliffs and pounding surf. If time permits, keep driving towards Nugget Point, iconic for its steep headland with a lighthouse perched atop. Continue through Invercargill to Riverton and Colac Bay, and then head north to Manapouri. From here you can embark on a day or overnight cruise to the remote Doubtful Sound, renowned for its natural beauty. Just a short way further will bring you to your lakeside destination of Te Anau, gateway to Fiordland National Park and Milford Sound.

### Your accommodation: Te Anau Lodge

Te Anau Lodge began its existence as a Catholic convent in 1936 before being converted into a wonderful lodge. A beautiful Rimu wood interior awaits you and each of the 7 rooms house furniture made from stunning native woods.

Meals included: Breakfast



## Day 15





## Te Anau to Milford Sound, returning to Te Anau

The road to Milford Sound offers some of the most beautiful and iconic scenery in the country. From crystal-clear lakes and towering mountains to lush glacier-formed meadows, this area is dramatic and unyielding. Stretch your legs on the Chasm Walk, a short stroll through native beech forest to see several powerful waterfalls. Continue on through the Homer Tunnel, an engineering marvel at 1219 meters long. Arriving in the village of Milford, you will be greeted with an amazing view of Mitre Peak. A day cruise into the heart of the sound is not to be missed.

You'll learn about how this magnificent area was formed and experience the wonder of the falls that line the Fjord before back-tracking the way you came.

---

### Milford Sound Cruise with Real NZ - Lunch Included

Get up close and personal with Milford Sound on a leisurely cruise of this spectacular fiord. From thundering waterfalls to sky-high mountains to lush rainforests, Milford has it all. Experience the spray of a waterfall as you cruise close to sheer rock faces. Informative, participative and relaxed, this is the perfect way to experience Milford Sound to the fullest.

---

### Your accommodation: Te Anau Lodge

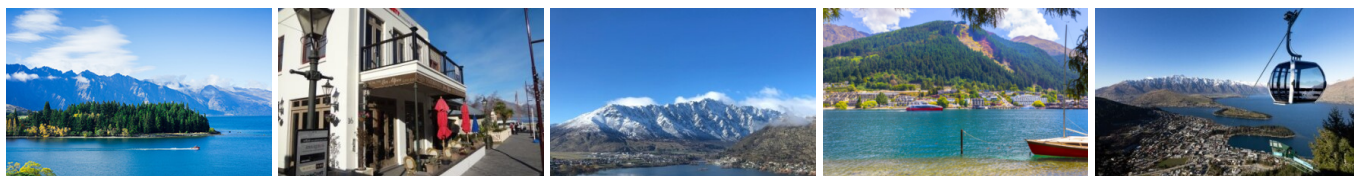
Te Anau Lodge began its existence as a Catholic convent in 1936 before being converted into a wonderful lodge. A beautiful Rimu wood interior awaits you and each of the 7 rooms house furniture made from stunning native woods.

Meals included: Breakfast, Lunch



---

## Day 16



### Te Anau to Queenstown

Journey across expansive tussock lands en route to Queenstown. Pass through Mossburn, renowned as the deer capital of New Zealand, and continue through the picturesque Southland countryside. As the road begins to trace the edge of Lake Wakatipu, marvel at the breathtaking views from the Devil's Staircase. Finally, approach Queenstown, the adventure capital of New Zealand, with the Remarkables mountain range standing majestically in the backdrop.

---

### Your accommodation: Queenstown Park Boutique Hotel

Queenstown Park Hotel is a boutique hotel with a modern romantic style in the heart of New Zealand's adventure capital. Set in peaceful parkland, savour views of Queenstown's majestic mountains. Enjoy easy access to the vibrant town centre where shopping, cafes and nightlife nestled on the shores of spectacular Lake Wakatipu.

Meals included: Breakfast



---

## Day 17



### Explore Queenstown

Well-known as New Zealand's 'adventure capital', Queenstown is home to a range of adventures, from the world's first and most famous bungy jumps to jet boat thrills, white-water rafting, and skydiving. However, Queenstown offers far more than a fast-paced, action-packed holiday. Settled on the shores of beautiful Lake Wakatipu beneath a soaring panorama of the Remarkables Mountain Range, this alpine town is surrounded by many historic, gastronomic, and scenic wonders. Take a stroll through the beautiful lakefront parks and gardens, browse through market stalls on weekends, dine in wonderful al-fresco restaurants, or ride on the 100-year-old historic Steamship - TSS Earnslaw to Walter Peak Station. Take the Queenstown Gondola up to Bob's Peak and soak up the panoramic views of the magnificent lake and mountain ranges. And after all of that, if you do want the adrenaline rush, Queenstown is known for taking your pick from the Shotover Jet, Canyon Swing, Zipline, Luge, or Heli-hike.

### Your accommodation: Queenstown Park Boutique Hotel

Queenstown Park Hotel is a boutique hotel with a modern romantic style in the heart of New Zealand's adventure capital. Set in peaceful parkland, savour views of Queenstown's majestic mountains. Enjoy easy access to the vibrant town centre where shopping, cafes and nightlife nestled on the shores of spectacular Lake Wakatipu.

Meals included: Breakfast



---

## Day 18



### Queenstown to Franz Josef Glacier via Wānaka

From Queenstown you'll cross the Crown Range, the highest sealed road in New Zealand to arrive in the Alpine town of Wānaka, gateway to Mt Aspiring National Park. Skirting the shores of both Lake Wanaka and Hawea, you will enter the small town of Makarora. Stop at Blue Pools for a 1-hour return walk through the native beech forest to a glacier-fed swimming hole. Continue on through the remote seaside settlement of Haast before heading up the wild West Coast highway you pass through ancient temperate rainforests while getting sneak peeks of the wild coast beaches occasionally. Paringa Salmon Farm is worth a stop to stretch your legs, feed the fish, and stop for lunch and refreshments. Keep heading North and be sure to enjoy the view of the ever-changing towering snowcapped Southern Alps Mountain Range. Fox Glacier welcomes you first, then comes your destination for the night Franz Josef township.

---

### Your accommodation: Westwood Lodge

Westwood is a purpose built lodge, crafted entirely from wood and exquisitely decorated throughout. The lounge is the place to meet to watch the Southern Alps turn a soft pink in the setting sun.

Meals included: Breakfast



---

## Day 19



### Explore Franz Josef

Franz Josef is a small yet lively town in the heart of New Zealand's West Coast, best known for its spectacular 12 km-long glacier. The township is surrounded by lush, rainforest-clad mountains and has a vibrant atmosphere with plenty to explore. A variety of scenic walking trails offer incredible views of the glacier, but for a truly up-close experience, a licensed helicopter tour is the only way to set foot on the ice. Beyond the glacier, unwind in the rejuvenating Hot Pools or visit the West Coast Wildlife Centre to spot rare kiwi birds. If you're in the mood for a more relaxed day, the township is home to charming souvenir and gift shops, as well as great dining spots like SnakeBite Brewery and King Tiger. Whether you're chasing adventure or relaxation, Franz Josef is a stunning blend of wild beauty and welcoming hospitality.

---

### Your accommodation: Westwood Lodge

Westwood is a purpose built lodge, crafted entirely from wood and exquisitely decorated throughout. The lounge is the place to meet to watch the Southern Alps turn a soft pink in the setting sun.

Meals included: Breakfast





## Day 20



### Franz Josef to Greymouth Train Station

Head north along the mighty West Coast highway you pass through ancient temperate rainforests while getting sneak peeks of the wild coast beach occasionally. Whataroa is the next town where you can see one of the world's rarest birds, the Kōtuku - White Heron. The Kōtuku nest at the Waitangi Roto Nature Reserve, only accessible with a guided tour from October to March. The next town is Ross which is the site of an old gold mining settlement where the local information centre offers you the chance to pan for gold. Hokitika is a great place to explore craft and gift stores and head to the coast and take in the endless sea views. The Pounamu-Greenstone on offer in Hokitika is probably some of the best you will see in the country. Continue on to Greymouth, the largest town on the West Coast and the starting point for the next leg of your journey the TranzAlpine Scenic Train. Drop your rental car at the Greymouth Train Station depot located at the train station building before boarding your train to Christchurch.

### TranzAlpine Scenic Train: Greymouth to Christchurch

Considered one of the world's great train journeys, the TranzAlpine Scenic Train takes you from Greymouth to Christchurch. Travel across the South Island from the west to the east coast through Arthur's Pass National Park. From the comfort of your carriage see lush beech forest, deep river valleys and the spectacular peaks of the Southern Alps. Descend to the windswept Canterbury Plains before arriving in the city of Christchurch.

### Shared Transfer from Christchurch Train Station to Christchurch CBD Accommodation with Christchurch Touring Company

On arrival at the Christchurch railway station, you will be met by a driver and transferred to your Christchurch accommodation.

### Your accommodation: Orari Bed & Breakfast

Orari Bed and Breakfast offers elegant and inviting accommodation in the heart of Christchurch city. This heritage building has all the charm of a grand Victorian home, but with modern comforts providing for an enjoyable stay.

Meals included: Breakfast



## Day 21



### Private Transfer from Christchurch Accommodation to Christchurch Airport with Christchurch Touring Company

A private transfer will collect you from your accommodation and transfer you to Christchurch Airport in time for your departing flight.

### Farewell from Aotearoa-New Zealand

Bid farewell to New Zealand, taking with you unforgettable memories of its breathtaking landscapes and incredible adventures. In Maori, it is said mā te wā, which is not goodbye, it is see you soon!

## Tour details

Departures:	Daily
Tour type:	Nationwide Self Drive
Starts:	Auckland
Finishes:	Christchurch
Tour length:	21
Accommodation:	Boutique Lodges & Hotels
Car/transport type:	

---

## Included activities

Includes	All breakfasts
Includes	1 dinner
Includes	Private airport transfers
Includes	Private train station transfers
Includes	Interislander ferry crossing
Includes	TranzAlpine Train from Greymouth to Christchurch
Includes	Real Journeys Milford Sound Cruise

---

## Accommodation summary

Day 1	Fable Auckland
Day 2	Fable Auckland
Day 3	On the Point
Day 4	On the Point
Day 5	McHardy Lodge
Day 6	Bolton Hotel Wellington
Day 7	Sennen House, Picton
Day 8	Bendamere House B&B
Day 9	Orari Bed & Breakfast
Day 10	Orari Bed & Breakfast
Day 11	Hermitage Hotel, Aoraki Wing Premium
Day 12	Camp Estate at Larnach Castle
Day 13	Camp Estate at Larnach Castle
Day 14	Te Anau Lodge
Day 15	Te Anau Lodge
Day 16	Queenstown Park Boutique Hotel
Day 17	Queenstown Park Boutique Hotel
Day 18	Westwood Lodge
Day 19	Westwood Lodge
Day 20	Orari Bed & Breakfast