

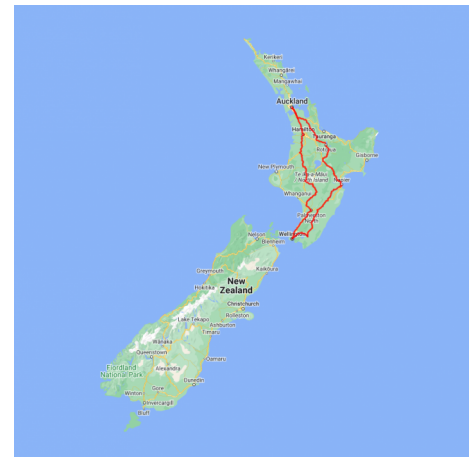


North Island Highlights

Explore the North Island's major visitor cities. After a day trip to beautiful Waiheke Island, travel south from Auckland via Rotorua and on to the art deco city of Napier. Then continue south for a night in picturesque Martinborough before you enjoy two nights in our vibrant capital Wellington. Take in the amazing scenery of the central North island returning to Auckland on board the Northern Explorer scenic train. This is a great value tour with plenty of time to explore the regions at your own pace.

Starts in: Auckland
Finishes in: Auckland
Length: 11days / 10nights
Accommodation: Motels
Can be customised: Yes

This itinerary can be customised to suit you perfectly. We can add more days, remove days, change accommodations, mix it up, add activities to suit your interests or simply design and create something from scratch. Call us today to get your custom New Zealand itinerary underway.



Inclusions:

Includes: Late model rental cars

Includes: Unlimited kms

Includes: Airport & ferry terminal rental car fees

Includes: Comprehensive tour pack (detailed itinerary, driving instructions, map/guidebooks, brochures)

Included activity: Private Transfer Auckland Airport to Auckland accommodation with Tourcorp

Included activity: Private transfer Wellington hotel to train station (IST)

Included activity: Private Transfer Auckland Train Station to Auckland accommodation with Tourcorp

Included activity: Dinner at the Sky Tower Orbit Restaurant

Includes: Fully inclusive rental car insurance (excess may apply)

Includes: GPS navigation

Includes: Additional drivers

Includes: 24/7 support while touring New Zealand

Included activity: Electronic Travel Guide and In-Country Support App

Included activity: The Northern Explorer Scenic Train: Wellington to Auckland

Included activity: Private Transfer Auckland accommodation to Auckland Airport with Tourcorp

Included activity: Hobbiton Movie Set Tour

Day 1



Private Transfer Auckland Airport to Auckland Accommodation

You will be met at the Auckland airport by the driver and transferred to your Auckland accommodation.

Welcome to Auckland

Auckland, New Zealand's self-proclaimed "City of Sails" is the country's largest metro area. Resting between the Pacific Ocean and the Tasman Sea, this urban paradise has something for everyone. Surrounded by native bush, rainforests, and an abundance of beaches, Auckland is a playground for both the city savvy and those with an eye for adventure. Explore the central museums and galleries on foot, or get out onto the water to experience the best views of the city.

Your accommodation: Nesuto Stadium Hotel and Apartments

Nesuto Stadium offers 4.5 star self-contained apartment accommodation in downtown Auckland City. Located a short walk from Britomart Transport and Entertainment Precinct, Auckland Waterfront and Ferries, Queen Street and Vector Arena, Nesuto Stadium is in a wonderful location to visit all of Auckland Cities attractions.



Day 2



Collect your rental car

This tour can be priced with any of the rental cars available in our fantastic range, from economy hatchbacks to prestige saloons and SUV's.

Explore Auckland City

Perched on the edge of a large natural harbour, New Zealand's "City of Sails" offers the best of both worlds. Sandy beaches, native bush and lush rainforests give way to a vibrant urban culture, humming with life. Spend time in the Viaduct Harbour, try your hand at sailing an America's Cup yacht or take the ferry to nearby Waiheke Island for a gourmet food and wine experience. If you're looking for a lovely hike, walk (if you're that way inclined) to the top of Auckland's highest volcano, Mt Eden, and take in soaring views of the gulf. Immerse yourself in nature's beauty at the expansive Auckland Botanic Gardens, sprawled across 156 acres of lush land and native forest on Hill Road. Pack a picnic, soak up the sunshine, and delight in the melodious birdsong during a peaceful lunch. Head up the Sky Tower, standing at just over 300m tall (about 1,000 feet) and have a meal in the 360 degree revolving restaurant. Scale the outermost perimeter of the Harbour Bridge or test your stomach and bungee off both. To end your day, catch a cab to Ponsonby Road and sample some upmarket culinary delights.

Dinner at the Sky Tower Orbit Restaurant

Soaring high above Auckland you'll discover Orbit, a truly iconic New Zealand brasserie offering diners sensational views - and food to match. Situated at the top of Auckland's Sky Tower, the dining room rotates once every hour, providing a truly unique experience with amazing 360-degree panoramas of the city, the Hauraki Gulf and beyond. Orbit offers a modern dining experience in a relaxed, open atmosphere with a delicious kiwi-inspired a la carte menu that features the best local and seasonal produce. As New Zealand's only rotating restaurant offering 360-degree views, it's an unforgettable experience that never ceases to delight.

SUGGESTED ACTIVITY - Fullers Ferry Auckland to Rangitoto Island return trip

A short 25-minute cruise through the Waitemata Harbour to the Hauraki Gulf delivers you to Rangitoto Island. Rangitoto Island is the largest and youngest of the many volcanoes that make up the Auckland volcanic field. It erupted around 600 years ago, but is extinct now and safe to explore. During your cruise to and from the island enjoy fantastic views of Rangitoto Island and Auckland the 'City of Sails'. On reaching the island you can walk to the summit (1 hour direct) for great views of the Hauraki Gulf and over Waitemata Harbour looking back towards Auckland. There are a number of walking trails to explore this volcanic island, further information can be found at the Department of Conservation website.

SUGGESTED ACTIVITY - Auckland Wine Country Half Day Tour including Lunch with Bush and Beach

Today you'll be leaving the city and heading north-west to Kumeu Wine Country, Auckland's Heritage Wine Region. Enjoy lunch at a contemporary vineyard, sample world-renowned wines and marvel at the rugged surf-fringed coastline nearby. Your first stop is award-winning Soljans Estate Winery. Utilising both traditional and modern techniques, Soljans produce varied and richly flavoured wines. Built with sunshine in mind and a distinct Mediterranean-style, the onsite restaurant showcases fresh seasonal produce from around the region. Continuing on, you'll visit Muriwai Beach home to a Gannet Colony. Situated on the cliffs overlooking the Tasman sea you'll have breathtaking views of the beach and ocean beyond as you observe one of the largest seabirds, the gannet, in their natural environment. Your final tasting is at West Brook Winery, one of New Zealand's oldest. These wines reflect true varietal character and their unique regional origins.

Your accommodation: Nesuto Stadium Hotel and Apartments

Nesuto Stadium offers 4.5 star self-contained apartment accommodation in downtown Auckland City. Located a short walk from Britomart Transport and Entertainment Precinct, Auckland Waterfront and Ferries, Queen Street and Vector Arena, Nesuto Stadium is in a wonderful location to visit all of Auckland Cities attractions.



Day 3



Auckland to Rotorua

The drive south from Auckland takes you past the Bombay Hills and into the rolling farmland and rich dairy pastures of the Waikato. The Bombay Hills mark the outer boundary of greater Auckland area and it's here you turn inland to central Waikato. You'll soon go through the town of Matamata where you can visit the fully intact Hobbiton film set used in the shooting of the Lord of The Rings and Hobbit trilogies. Continuing on, you'll pass several small farming communities before telltale signs of steam and other geothermal activity signal your arrival into Rotorua.

Hobbiton Movie Set tour from Shires Rest

Become immersed in the The Lord of the Rings and Hobbit films when you visit the actual Hobbiton movie set. Located just outside of Matamata in the heart of the lush Waikato farming region, your tour will begin with a drive through a picturesque sheep farm. You'll then be taken through Hobbit Holes, the Green Dragon Inn, the Mill and the Party Tree while your guide shares behind-the-scenes tales and insight into the making of the films. Spend time wandering through Bagshot Row before being led inside a Hobbit Hole to view the detailed interiors, designed to provide an authentic glimpse into the dwelling of a Hobbit.

SUGGESTED ACTIVITY - Redwoods Nightlights General Admission

Redwoods Nightlights is one of New Zealand's top design led tourism experiences that features 30 exquisite lanterns designed by world-renowned designer and sustainability champion David Trubridge. Floating between 9-20 metres above the forest floor, this eco-tourism walk is 700 metres long, spans across 28 suspension bridges and 27 platforms and takes about 40 minutes to complete.

SUGGESTED ACTIVITY - Polynesian Spa Deluxe Lake Spa

Rotorua's Polynesian Spa offers a unique thermal spa experience on the shore of Lake Rotorua. You'll enjoy tranquil bathing and lake views in four shallow alkaline rock pools, each with different temperatures (36°C to 42°C). Here you are surrounded by revitalising native New Zealand flora, natural rocks, the sound of two waterfalls and a grotto. The pools are filled with soothing alkaline mineral water leaving your skin soft and supple. Relax in the outdoor relaxation area overlooking the four hot mineral pools and Lake Rotorua, here you can further unwind on the five geothermally heated recliners set in the stunning backdrop of New Zealand's lush and natural greenery. A large indoor relaxation lounge also overlooks Lake Rotorua, whereas as a Lake Spa guest, you are welcome to move from the pools to the lounge once dried off and return to bathe in the Lake Spa pools as you wish. The Lake Spa is a unique thermal pool environment, where the atmosphere changes from day to night, and from winter steam to summer sparkle.

Your accommodation: Quest Rotorua Central

Located in the heart of Rotorua, just a stone's throw from the restaurant and shopping precinct. Purpose built in 2012, all apartments are equipped with modern fixtures, full cooking and laundry facilities that make Quest Rotorua Central your perfect home away from home.



Day 4



Explore Rotorua

Peppered with natural hot springs, boiling mud pools and steaming geysers, Rotorua sits within one of the world's most active volcanic regions. Geothermal landmarks aside, this city of sulphur has a rich indigenous history. Home to several prominent Maori tribes, a visit to one of the Maori Villages should be high on your agenda, as should an excursion to the Polynesian Spa for an invigorating soak in its natural mineral hot springs.

Spike your adrenaline at Velocity Valley Adventure Park on stomach-dropping attractions such as static skydiving, or a giant swing reaching 130 km per hour. Alternatively, head up the Rotorua Gondola for soaring lake views, and ride the luge at night for an extra thrill.

Fans of Lord of the Rings and The Hobbit should drive to nearby Matamata and experience the actual movie set 'Hobbiton'. Make the most of your time in Rotorua with an excursion through the Wai-O-Tapu Thermal Wonderland, one of the area's most colourful volcanic attractions.

SUGGESTED ACTIVITY - National Kiwi Hatchery Tour

The National Kiwi Hatchery Tour is a special opportunity to gain insight into and view this highly regarded conservation centre. Developed with the visitor experience in mind, the hatchery boasts special viewing opportunities and is hosted by kiwi expert guides who ensure guests leave fully informed and all questions answered. Learn all about New Zealand's intriguing national icon and the efforts of the kiwi husbandry team, see and discover what it takes to hatch and rear chicks, and if you're lucky see baby chicks in person!

SUGGESTED ACTIVITY - Original Ziplining Experience with Rotorua Canopy Tours

Embark on a three hour adventure through native New Zealand forest. Journey through the beautiful forest canopy via an incredible network of trails, tree platforms, Ziplines and swing bridges. See breathtaking views of the woodland valleys and hills as you fly through tight openings in the trees. In between the thrill of the ziplines and suspended tree bridges, your guides will share their passion and knowledge for the forest and the conservation challenges to preserve it. It is important you read and understand the risks associated with this activity. For more information see [here](#).

SUGGESTED ACTIVITY - Te Pā Tū Evening Maori Cultural Experience

New Zealand's Most Awarded Cultural Attraction, presenting Te Pā Tū. Feast on song, drama, tradition, and divine seasonal kai (cuisine) within the forest Pā (village) blanketed by towering Tawa trees, blazing bonfires, and a forest-formed amphitheatre. Te Pā Tū shares Māori history, traditions, and cultural aspirations across 4-hours of celebration and feasting. These events change with each season of the maramataka, the Māori lunar calendar.

SUGGESTED ACTIVITY - Wai-O-Tapu Thermal Wonderland

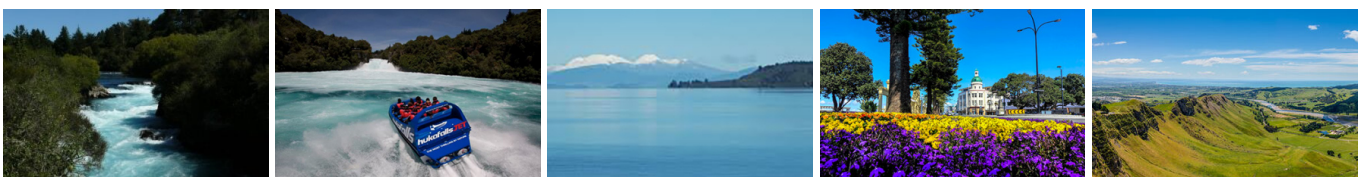
Wai-O-Tapu Thermal Wonderland is a spectacular showcase of New Zealand's most colourful and unique geothermal elements sculpted by thousands of years of volcanic activity. You are introduced to a uniquely different natural landscape – the key to what you see lies below the surface – one of the most extensive geothermal systems in New Zealand, extending over 18-sq. km. Enjoy viewing unique volcanic features as you walk at your own pace along well-defined tracks. Relax in the first-class Visitor Centre, home to the Gift Shop and Café facilities. Visit the Mud Pool, the largest in New Zealand, it was originally the site of a large mud volcano which was destroyed through erosion in the 1920s. See the history and beauty of the Lady Knox Geyser at 10:15 am every day. Lady Knox Geyser provides a unique opportunity to see an eruption to heights of 10 to 20 metres.

Your accommodation: Quest Rotorua Central

Located in the heart of Rotorua, just a stone's throw from the restaurant and shopping precinct. Purpose built in 2012, all apartments are equipped with modern fixtures, full cooking and laundry facilities that make Quest Rotorua Central your perfect home away from home.



Day 5



Rotorua to Napier

This drive will take you through the thermal region just south of Rotorua. Home to a plethora of unique geothermal attractions including boiling mud pits, natural hot springs and steaming geysers, this area is a must do before you move on to Napier. Notable attractions are Wai-O-Tapu, Waimangu and Craters of the Moon.

Continue on to Taupo and marvel at the lake, a giant crater formed following a volcanic eruption in the year 180 CE. As you approach the city, be sure to stop at Huka Falls to view the spectacular sight of hundreds of cubic metres of water spilling every second down the narrow 11 metre drop.

For an extra thrill take a jet-boat ride to the base of the falls. Leaving Taupo, follow the road as it climbs the rugged Ahimanawa Range before descending back down the Pacific Coast to art deco Napier.

SUGGESTED ACTIVITY - Grape Escape half day Hawke's Bay Wine tour

This wine tasting tour is designed for casual imbibers and wine aficionados. Meet like-minded people and share an appreciation of Hawke's Bay's fantastic wines. Taste great wines made with passion and learn of the areas unique growing conditions. Take home outstanding wines and wonderful memories. Join a fun filled wine tasting afternoon in the sun driving through absolutely stunning scenery. Meet like-minded people and share an appreciation of this region's fantastic wine. Visit four to five wineries and enjoy a cheese platter on the grounds of the Ngatarawa Vineyard beside the lily pond.

Walking tracks in and around Hawkes Bay

Hawke's Bay offers a variety of scenic walks, from coastal paths to forest trails, perfect for exploring the region's natural beauty. Whether you're looking for a short stroll or a more challenging hike, there's something for everyone. Be sure to check with the Department of Conservation for current conditions before heading out.

Your accommodation: Bella Vista Napier

Bella Vista Motel Napier invites you to experience its friendly service and modern motel units. Located close to shops, restaurants and the renowned Marine Parade with its majestic Norfolk pines.



Day 6



Explore Napier and the Hawke's Bay

With its Mediterranean climate and Art Deco style, Hawke's Bay is an attractive holiday prospect. As the nation's first winemaking region, a visit to one of its 30 wineries is a must. A trip to Mission Estate touted as the birthplace of NZ wine can't be missed. For the truly enthused head out on a tour of the vines. Those into Gatsby will enjoy the chance to view prominent Art Deco landmarks on a 1930s Vintage Car Tour. Passengers will spend just over an hour learning about the history of the city's architecture including the Napier Municipal Theatre, one of the top ten Art Deco Buildings in the world. If you're after some fresh air, hire a bike and take your pick of one of over 200km of cycling trails or head on down to one of the many beaches that ring the area. Ocean or Waimarama beach are good choices and both are patrolled by surf lifeguards during the summer. Indulge in some local produce and head out on a cheese, chocolate, honey or orchard tour.

SUGGESTED ACTIVITY - Gannet Safaris

Drive along the scenic coast from Napier to Te Awanga and join Gannet Safaris Overland and the world's largest, most accessible gannet colony at Cape Kidnappers. Gannet Safaris has been guiding visitors over Cape Kidnappers for over 35 years and their safaris are the only way to be driven right to within a few feet of these remarkable birds. You will travel in comfort in air-conditioned 4 x 4 wheeled vehicles, through Cape Kidnappers Station - traversing riverbeds, broad rolling pastures, stands of native bush, steep gullies and breath-taking inclines. There is a stop on the way at a spectacular cliff top with panoramic views of Hawke Bay right across to Mahia peninsular. The 36km, three hour trip includes a commentary by your tour guide/driver on the farming operation on Cape Kidnappers Station and an introduction to the gannets. On arrival at the gannets you can stretch your legs and take in the scenery from your position at the brink of the cliff's edge, 100 metres above the ocean!

SUGGESTED ACTIVITY - Grape Escape half day Hawke's Bay Wine tour

This wine tasting tour is designed for casual imbibers and wine aficionados. Meet like-minded people and share an appreciation of Hawke's Bay's fantastic wines. Taste great wines made with passion and learn of the areas unique growing conditions. Take home outstanding wines and wonderful memories. Join a fun filled wine tasting afternoon in the sun driving through absolutely stunning scenery. Meet like-minded people and share an appreciation of this region's fantastic wine. Visit four to five wineries and enjoy a cheese platter on the grounds of the Ngatarawa Vineyard beside the lily pond.

Your accommodation: Bella Vista Napier

Bella Vista Motel Napier invites you to experience its friendly service and modern motel units. Located close to shops, restaurants and the renowned Marine Parade with its majestic Norfolk pines.



Day 7



Napier to Martinborough

As you leave the rolling countryside of the Hawke's Bay you'll be greeted with some of the country's richest dairy farmland in the Manawatu Gorge. Continue on through the Wairarapa region and stop in the Pukaha Mount Bruce Wildlife Centre, where you can see some of New Zealand native animals. Take another break in Masterson, and visit the interactive Woolshed Museum to learn about sheep farming in New Zealand. As you drive south, a visit to historic Greytown is a must-do. Take in the restored Victorian buildings and make time for a cup of tea at one of its quaint cafes. Leaving state highway 2 you will cross over the Ruamahanga River into Martinborough wine country your destination for the day.

SUGGESTED ACTIVITY - Martinborough Half Day Wine Tour with Martinborough Wine Tours

Visit wonderful vineyards such as Te Kairangi Wines, Tirohana Estate, Cabbage Tree Vineyard and Martinborough Vineyard on this half day tour of the premium wine region of Martinborough. Taste the wines, learn about the development of the region, its people and characters from knowledgeable guides.

Your accommodation: The Claremont, Martinborough

Set just outside the main village, The Claremont is the ideal base for you to enjoy everything the region has to offer. Well-appointed, self-contained apartments and units will make your stay very comfortable.



Day 8



Martinborough to Wellington City

Today you will cross the Rimutaka Ranges as you make your way to New Zealand's capital city, Wellington. Often compared to Melbourne, Wellington is vibrant cultural hub. Home to the nation's centre of government. Legislation happens in the aptly named 'Beehive', an executive wing attached to the Houses of Parliament. At one kilometre squared, the city centre (easily traversed on foot) has an international feel and is peppered with underground art shows, alleyway cafes and New York style delis. Take in the boardwalk view as you stroll to Te Papa Museum or indulge your cinematic side exploring Weta Workshop, the Oscar Award winning design studio for Lord Of The Rings. For a taste of vintage fashion, spend some time (and dollars!) on Cuba Street browsing the boutiques. Work off last night's dinner with a cycling tour of Oriental Bay and undo your good work with a Hokey Pokey ice-cream in the sun. For those heading further down, the capital is where you board the ferry crossing the Cook Strait to the South Island.

Your accommodation: CityLife Wellington

City Life Wellington is a suite style hotel with every amenity required for a comfortable stay, as well as being in a superb location to explore the compact city centre. Situated on Lambton Quay, you'll find the best shopping, tourist attractions and cultural landmarks all within easy walking distance.



Day 9



Wellington City

Wellington home to New Zealand's centre of government has a largely cosmopolitan feel. Often referred to as 'mini Melbourne', this (self-described) windy city is a melting pot of art, culture, food, and fashion. Quirky laneway bars, underground art shows, and hipster eateries make up its inner-city vibe, while a host of sandy beaches outside the urban bustle bring a cheerful holiday feel.

Head to Te Papa Museum for a history lesson and a ticket to one of its many international exhibitions or jump aboard the Wellington Cable Car at Lambton Quay - the only running funicular railway in the country. For those with an eye for boutique, fashion wander through Cuba St to sample some of the city's best vintage stores. Break for coffee at a hipster cafe and be sure to snap a pic outside the 'Beehive,' New Zealand's parliamentary debate chamber.

Go behind the scenes at Weta Workshop Experience, the Oscar Award Winning design studio behind Lord Of The Rings, The Hobbit, and Avatar. If you're a foodie at heart, a two-hour round trip to Martinborough is a must-do. Take your time as you wind through spectacular wine country, and be sure to stop in at Martinborough Wines or Ata Rangi Martinborough. For an educational day out, learn about New Zealand's native species at Zealandia, the world's first fully-fenced eco-sanctuary and home to over 40 types of endangered and native birds.

SUGGESTED ACTIVITY - Wellington Half Day Tour

Witness the best sights of New Zealand's capital city up close and personal, before experiencing the beauty of the coastline that surrounds central Wellington and its harbour. On this tour, you will head for the hills of Mt Victoria to witness the stunning landscape of Wellington and its harbour below. You will then follow the coastline round to the Weta Cave Museum, which is the showpiece of Peter Jackson's film empire. After a drive around the south coast, you will head back into the city for a ride on the Cable Car and a walk around the lady Norwood rose gardens. The tour concludes with a visit to the Beehive and our Parliament buildings.

SUGGESTED ACTIVITY - Zealandia By Night Wildlife Sanctuary Tour

Taking a night tour of Zealandia wildlife eco-sanctuary is an unforgettable experience and one that comes highly recommended. A conservation success and safe haven for some of New Zealand's rarest native animals, Zealandia is home to many remarkable species of birds, reptiles and insects living wild within a beautiful 225 hectare (one square mile) valley, just 10 minutes from the central city.

Your tour begins with an interactive exhibition before you walk through the gates of Zealandia predator-exclusion fence into the sanctuary. Your guide will then lead you on a torch-light walk through the native New Zealand bush. Possible sights include Kiwi foraging on the forest floor, tuatara hunting for food, glowworms shining, tiny Maud Island frogs in their enclosure, pateke (brown teal) ducks feeding at night and kaka (parrots) coming in to roost. Zealandia is one of the best places to see kiwi in the wild. Over 100 of these nocturnal birds live freely in their natural environment inside the safety of the sanctuary valley, so your chances of seeing one are high!

Your accommodation: CityLife Wellington

City Life Wellington is a suite style hotel with every amenity required for a comfortable stay, as well as being in a superb location to explore the compact city centre. Situated on Lambton Quay, you'll find the best shopping, tourist attractions and cultural landmarks all within easy walking distance.



Day 10



Private transfer to Wellington train station

You will be collected from your hotel and transferred to Wellington train station to meet your train.

The Northern Explorer Scenic Train: Wellington to Auckland

The Northern Explorer is a journey through the heart of the North Island, travelling between Wellington, New Zealand's arts and culture capital and Auckland, New Zealand's largest city. Along the way you pass the Central North Island ski towns of National Park and Ohakune. You also see fantastic views of New Zealand farmland, the volcanic plateau, Mount Ruapehu, the world famous Raurimu Spiral, and stunning river gorges - all from panoramic windows or open air viewing decks. All carriages feature large panoramic windows giving sweeping views of the magnificent North Island. The Observation Carriage includes a mix of seating including lounge-style seating. The lounge-style seating is arranged at the very rear of this glass-backed carriage enabling you to enjoy a totally unique Northern Explorer experience.

Private Transfer Auckland Train Station to Auckland accommodation

You will be met at the Auckland Train Station and transferred to your Auckland accommodation.

SUGGESTED ACTIVITY - Northern Explorer Scenic Plus Addon - KiwiRail

Feel like luxurious service, exclusive meals, inclusive drinks and priority check in and boarding? The Scenic Plus add-on option is for you. Enjoy personal service with panoramic windows, spacious carriages and comfortable seating. The exclusive open-air viewing carriage is available if you feel like capturing the ultimate photo or simply wish to experience the great outdoors whilst travelling through the Southern Alps. Your food is prepared exclusively in a kitchen carriage, with paired drinks and a paddock to plate regionally inspired food menu all your senses will be fully engaged on this journey.

Your accommodation: Nesuto Stadium Hotel and Apartments

Nesuto Stadium offers 4.5 star self-contained apartment accommodation in downtown Auckland City. Located a short walk from Britomart Transport and Entertainment Precinct, Auckland Waterfront and Ferries, Queen Street and Vector Arena, Nesuto Stadium is in a wonderful location to visit all of Auckland Cities attractions.



Day 11



Private Transfer Auckland accommodation to Auckland Airport with Tourcorp

You will be met at your Auckland accommodation by the driver and transferred to the airport.

Farewell from New Zealand

Bid farewell to New Zealand, taking with you unforgettable memories of its breathtaking landscapes and incredible adventures.

Tour details

Departures:	Daily
Tour type:	North Island Self Drive
Starts:	Auckland
Finishes:	Auckland
Tour length:	11
Accommodation:	Motels
Car/transport type:	

Included activities

Includes	Private airport transfers
Includes	Private train station transfers
Includes	Northern Explorer Scenic Train from Wellington to Auckland

Accommodation summary

Day 1	Nesuto Stadium Hotel and Apartments
Day 2	Nesuto Stadium Hotel and Apartments
Day 3	Quest Rotorua Central
Day 4	Quest Rotorua Central
Day 5	Bella Vista Napier
Day 6	Bella Vista Napier
Day 7	The Claremont, Martinborough
Day 8	CityLife Wellington
Day 9	CityLife Wellington
Day 10	Nesuto Stadium Hotel and Apartments