



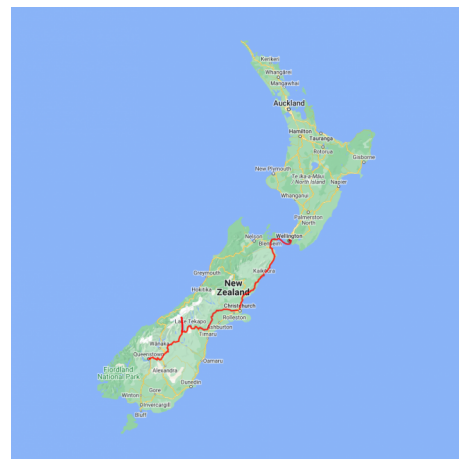
## Southern Highlights Wellington to Queenstown

Travel from our capital city of Wellington all the way south to the 'Adventure Capital' of Queenstown. After crossing the Cook Strait and passing through the Marlborough Sounds you'll arrive in the South Island, where you're introduced to the wines of the Marlborough region. Continuing south you'll visit the marine wildlife mecca of Kaikoura for a whale watching adventure. In Mt. Cook National Park you'll get up close to the icebergs of the Tasman Glacier lake before the final leg of your travels takes you to the alpine adventure capital of Queenstown.



Starts in: Wellington  
Finishes in: Queenstown  
Length: 8days / 7nights  
Accommodation: Hotel 4 star  
Can be customised: Yes

This itinerary can be customised to suit you perfectly. We can add more days, remove days, change accommodations, mix it up, add activities to suit your interests or simply design and create something from scratch. Call us today to get your custom New Zealand itinerary underway.



### Inclusions:

Includes: Late model rental cars

Includes: Fully inclusive rental car insurance (excess may apply)

Includes: Unlimited kms

Includes: GPS navigation

Includes: Airport & ferry terminal rental car fees

Includes: Additional drivers

Includes: Comprehensive tour pack (detailed itinerary, driving instructions, map/guidebooks, brochures)

Includes: 24/7 support while touring New Zealand

Included activity: Private transfer Wellington airport to your accommodation (IST)

Included activity: Electronic Travel Guide and In-Country Support App

Included activity: Private transfer Wellington hotel to Interislander Ferry with IST

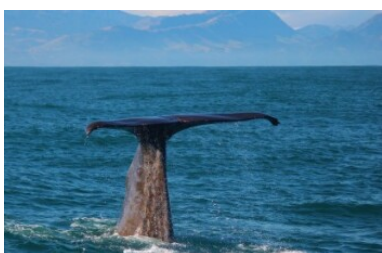
Included activity: Interislander Ferry Wellington to Picton with Premium Plus Lounge

Included activity: Half Day Marlborough Wine Tour with Sounds Connection

Included activity: Ocean's Cabin with Whale Watch Kaikōura

Included activity: Glacier Explorers

: Meals included: 7 breakfasts



## Day 1



### Private transfer Wellington airport to your accommodation

You will be met on arrival at Wellington airport and transferred to your accommodation.

---

### Welcome to Wellington

Wellington City is New Zealand's capital. It sits on a wonderful deep natural harbour and is surrounded by bush clad hills. The city centre itself is quite compact (only around 1 square kilometre) and so exploring on foot is relatively easy. From your city centre accommodation you can easily stroll the cafes and restaurants around Courtenay Place and if you arrive early enough New Zealand's national museum, Te Papa, is also close by.

---

### Your accommodation: James Cook Hotel Grand Chancellor Wellington

At the heart of Wellington's commercial and retail districts the James Cook Hotel Grand Chancellor has 260 well appointed rooms and suites. Located on The Terrace, nearby to the Cable Car, Parliament, TSB Arena, Te Papa and Westpac Stadium, this is a great base to explore New Zealand's thriving capital city.



## Day 2



### Private transfer Wellington hotel to Interislander Ferry with IST

You will be collected from your hotel and transferred to the Interislander ferry terminal in time for your ferry check in.

---

### Interislander Ferry Wellington to Picton with Premium Plus Lounge

The 92 km ferry journey between Wellington and Picton, taking around 3 hours, is hailed as one of the world's most beautiful ferry rides. Departing Wellington Harbour, you'll pass landmarks like Pencarrow Head with New Zealand's oldest lighthouse, Red Rocks' seal colony, and Oterangi Bay, famous for its record wind speed. From the Cook Strait, marvel at views of the Kaikōura Ranges and spot dolphins and seabirds. An hour of the trip winds through the stunning Marlborough Sounds, featuring bush-clad mountains, tranquil bays, and crystal-clear waters—a photographer's dream. The journey concludes in the charming town of Picton at the end of Queen Charlotte Sound. When not soaking up the views from the deck, relax in the Premium Plus lounge, offering complimentary drinks, snacks, internet, and luxurious seating for the most comfortable way to cross the Cook Strait.

---

### Collect Rental Car

Choose a car to best suit your needs from our fantastic rental car range. From compact economy, hatchbacks to prestige SUVs. &nbsp;

---

### Picton to Blenheim

It is a short 30 minute drive, as you'll follow the valley south to arrive in Blenheim, located in the heart of Marlborough - New Zealand's largest wine producing region. Go through acres of leafy green vines and marvel at the magnificent 'dry hills' of Marlborough in the distance.

---

### Half Day Marlborough Wine Tour with Sounds Connection

An afternoon among the vines! Be immersed in the Marlborough wine country with the Sounds Connection half day wine tour. Get collected from your accommodation and taken through three or four hand-picked wineries to taste the award-winning produce this region is known for. Hear about the history of winemaking in Marlborough as well as learning the unique processes each winery goes through. &nbsp;

---

### Your accommodation: Carnmore Chateau Marlborough

Carnmore Chateau Marlborough offers luxury accommodation in the heart of Blenheim, one of New Zealand's most famous wine regions. This boutique hotel prides itself on offering guests luxury accommodation with enviable attention to detail, overlooking Seymour Square Gardens and is just a short walk from Blenheim's town centre.

Meals included: Breakfast



---

### Day 3



#### Blenheim to Kaikōura

Cross Marlborough and head towards one of the most spectacular coastlines of the South Island, the Kaikōura Coast. The road hugs the shore for around 50 kms and offers many chances to view native wildlife. To the east is the South Pacific Ocean and to the west the towering Kaikōura Ranges. Kaikōura Township is a bustling little place with many cafes, restaurants and shops, but the main reason for visiting here is the wildlife and it's one of the only places in New Zealand you can see whales year round.

---

### Your accommodation: Bendamere House B&B

Bendamere House B&B has quality ensuite rooms, detached from the main house adding to the privacy and comfort, with superb views overlooking the Pacific Ocean and Seaward Kaikoura mountain range.

Meals included: Breakfast



---

### Day 4



#### Ocean's Cabin with Whale Watch Kaikōura

Experience New Zealand's only marine-based whale-watching company. Whale Watch Kaikōura offers a once-in-a-lifetime, up-close encounter with the giant Sperm Whale. You are also likely to encounter New Zealand fur seals, dolphins, and albatross. Depending on the season you may also see Pilot, Blue, and Southern Right whales as well as migrating humpbacks. Often orcas can be spotted here and the world's smallest dolphin, the Hector's, occasionally makes an appearance.

---

### Kaikōura to Christchurch

Travel down the coast before heading inland through the North Canterbury wine region - the Waipara Valley. If you've time on your hands we recommend taking a detour to Hanmer Springs for relaxing dip in its thermal pools. Arriving into Christchurch you'll see a new and improved city, steadily rising from the ruins of the 2011 and 2010 earthquakes.

---

### Your accommodation: The George Hotel

The George is the essence of supreme comfort. The award-winning 5 star hotel is opposite Hagley Park and just a few minutes stroll from the Botanic Gardens. It also has an award-winning restaurant, 50 Bistro onsite.

Meals included: Breakfast



## Day 5



### Christchurch to Aoraki-Mt Cook National Park

Drive through the heart of the South Island, crossing the vast Canterbury plains. Catch your breath in Geraldine before continuing through Fairlie. Ascending Burkes pass you'll come to the picturesque town of Lake Tekapo. Follow the road and take in the view of Aoraki-Mt Cook (New Zealand's tallest mountain) from the shores of Lake Pukaki, known for its glacier fed turquoise blue colour. Continue along the lake to your final destination Aoraki-Mt Cook Village.

### Glacier Explorers

Experience 500-year-old icebergs up close on the Aoraki-Mt Cook terminal lake. The Glacier Explorers tour is the only one of its kind in New Zealand and one of only three in the world! Very few glaciers terminate into lakes and even fewer of them are accessible. See towering ice cliffs and floating icebergs from the safety of a specially designed boat. These boats provide a safe way to view unseen and inaccessible areas of New Zealand's largest glacier The Tasman.

### Your accommodation: Hermitage Hotel, Aoraki Wing Premium

The Hermitage Hotel ringed by magnificent snow-capped peaks of the Southern Alps, is a world-renowned tourist destination and has been an icon of superior accommodation and dining since 1884.

Meals included: Breakfast



## Day 6



### Aoraki Mt Cook National Park to Queenstown

Leaving the alpine region of Aoraki Mt Cook, you'll travel through the lakeside town of Twizel, then a little further to Omarama the gliding capital of New Zealand. Continue on over the Lindis Pass, one of New Zealand's highest roads with a summit of 971 metres. Arrive in the quaint village of Tarras, then continue on a short way to the historic Bendigo Reserve, one of Otago's original gold mining settlements. Follow the road to Cromwell, and keep going through the sheer cliffs of the Kawarau Gorge towards Gibbston, one of New Zealand's premier wine growing regions. See the historic Kawarau Bridge where you can bungy jump or relax and watch others take the plunge. Approaching Queenstown, the Remarkables mountain range comes into view as you arrive into the adventure capital of New Zealand.

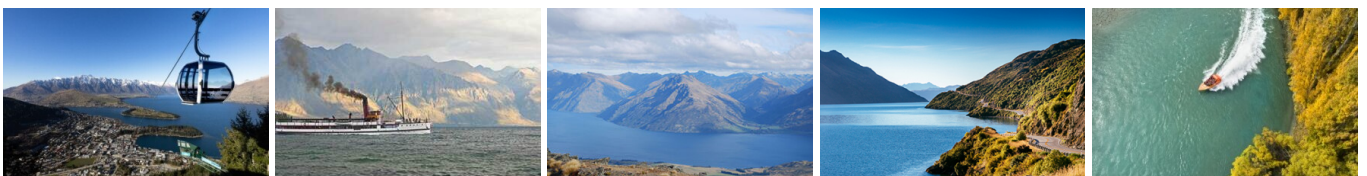
### Your accommodation: Rendezvous Heritage Queenstown

At the Rendezvous Heritage Queenstown, you could be forgiven for thinking you were in a postcard. Soak in the amazing view of the towering Remarkables mountain range rising from Lake Wakatipu from the comfort of the hotel. Crafted from centuries-old schist stone and cedar, this sophisticated Queenstown hotel is the perfect base to explore the adventure capital.

Meals included: Breakfast



## Day 7



## Explore Queenstown

Well-known as New Zealand's 'adventure capital', Queenstown is home to a range of adventures, from the world's first and most famous bungee jumps to jet boat thrills, white-water rafting, and skydiving. However, Queenstown offers far more than a fast-paced, action-packed holiday. Settled on the shores of beautiful Lake Wakatipu beneath a soaring panorama of the Remarkables Mountain Range, this alpine town is surrounded by many historic, gastronomic, and scenic wonders. Take a stroll through the beautiful lakefront parks and gardens, browse through market stalls on weekends, dine in wonderful al-fresco restaurants, or ride on the 100-year-old historic Steamship - TSS Earnslaw to Walter Peak Station. Take the Queenstown Gondola up to Bob's Peak and soak up the panoramic views of the magnificent lake and mountain ranges. And after all of that, if you do want the adrenaline rush, Queenstown is known for taking your pick from the Shotover Jet, Canyon Swing, Zipline, Luge, or Heli-hike.

---

### SUGGESTED ACTIVITY - Shotover Jet Canyon Jet Boat Ride

Shotover Jet is the only company permitted to operate in the Shotover River Canyons. It's a thrilling ride! Skim past rocky outcrops at close range in your Shotover Jet 'Big Red', as you twist and turn through the narrow canyons at breathtaking speeds. And a major highlight - hold tight for the world-famous Shotover Jet full 360-degree spins!

---

### SUGGESTED ACTIVITY - Gondola and 3 Luge Rides with Skyline Queenstown

In the heart of Queenstown, located 450 metres above town in the Ben Lomond Scenic Reserve is the Skyline Complex. A gondola ride to the summit makes for awe-inspiring views of the city surround. Arrive at the complex and wander the outside viewing decks for a picture perfect outlook. Then onto the Luge! The 800 metre luge track offers an exhilarating journey through banked corners, tunnels and dippers.

---

### SUGGESTED ACTIVITY - TSS Earnslaw Cruise and Walter Peak Gourmet BBQ Dinner

Enjoy a quintessential Kiwi experience, a delicious gourmet BBQ buffet meal, and a farm demonstration in a stunning lakeside setting. Take in the stunning views of Lake Wakatipu and its surroundings as you cruise across the lake to the historic Walter Peak high country farm aboard the TSS Earnslaw Steamship. Enjoy the ambiance of the heart of the stately homestead while your Colonel's Homestead Restaurant chef prepares a gourmet BBQ dinner. Your seasonal menu includes an extensive selection of local New Zealand produce, including succulent meats and a selection of delicious vegetables and salads. Complete your meal with your choice of delicious desserts, or New Zealand cheeses. After dinner, watch the farm dogs in action with a sheep-herding demonstration and say hello to the other farm animals. Finally, cruise home under the southern stars and enjoy the fresh night air as the lights of Queenstown draw ever closer.

---

### Your accommodation: Rendezvous Heritage Queenstown

At the Rendezvous Heritage Queenstown, you could be forgiven for thinking you were in a postcard. Soak in the amazing view of the towering Remarkables mountain range rising from Lake Wakatipu from the comfort of the hotel. Crafted from centuries-old schist stone and cedar, this sophisticated Queenstown hotel is the perfect base to explore the adventure capital.

Meals included: Breakfast



---

## Day 8



### Return your vehicle to Queenstown Airport

Explore more of Queenstown before dropping your rental car at the airport depot and continuing your onward journey.

---

### Farewell from Aotearoa-New Zealand

Bid farewell to New Zealand, taking with you unforgettable memories of its breathtaking landscapes and incredible adventures. In Maori, it is said mā te wā, which is not goodbye, it is see you soon!

---

---

## Tour details

Departures:	Daily
Tour type:	South Island Self Drive
Starts:	Wellington
Finishes:	Queenstown
Tour length:	8
Accommodation:	Hotel 4 star
Car/transport type:	

---

## Included activities

Includes	All breakfasts
Includes	Private airport transfers
Includes	Interislander ferry crossing
Includes	Half day Marlborough wine tour
Includes	Whale Watch Kaikoura tour
Includes	Glacier Explorers Tour, Mt Cook National Park

---

## Accommodation summary

Day 1	James Cook Hotel Grand Chancellor Wellington
Day 2	Cammore Chateau Marlborough
Day 3	Bendamere House B&B
Day 4	The George Hotel
Day 5	Hermitage Hotel, Aoraki Wing Premium
Day 6	Rendezvous Heritage Queenstown
Day 7	Rendezvous Heritage Queenstown