

## Minecraft: North Island Wonderland

Set off on a real-world Minecraft adventure through New Zealand's North Island's most stunning landscapes, each resembling the game's iconic biomes. Begin in Auckland, a vibrant city filled with towering structures and volcanic craters, much like a bustling Minecraft village. Then, journey underground into the Waitomo Glowworm Caves, where glowing blue lights mimic the game's enchanted ores. In Rotorua, bubbling mud pools and erupting geysers create a fiery Nether-like landscape, while the towering peaks of Whakapapa Village mirror the Extreme Hills biome. Explore the Kāpiti Coast, where vast ocean views and Kāpiti Island make you feel like you are discovering a hidden Ocean Monument. Finally, finish in the city of Wellington, making it the perfect end to your adventure.

Starts in: Auckland  
Finishes in: Wellington  
Length: 10days / 9nights  
Accommodation: Hotel 3 star  
Can be customised: Yes

This itinerary can be customised to suit you perfectly. We can add more days, remove days, change accommodations, mix it up, add activities to suit your interests or simply design and create something from scratch. Call us today to get your custom New Zealand itinerary underway.



### Inclusions:

Includes: Late model rental cars

Includes: Unlimited kms

Included activity: Private Transfer Auckland Airport to your Auckland Accommodation with Tourcorp

Included activity: Auckland Sky Tower Admission

Included activity: Glow Worm Caves Tour with Discover Waitomo

Included activity: Wai-O-Tapu Thermal Wonderland

Included activity: Sky Waka Gondola Sightseeing Trip with Whakapapa - Open Dated Voucher

: 3 breakfasts, 1 lunch, 1 special dinner

Includes: Fully inclusive rental car insurance (excess may apply)

Includes: Afterhours emergency support while touring

Included activity: Electronic Travel Guide and In-Country Support App

Included activity: Entry to the Hamilton Gardens

Included activity: Te Pō Indigenous Evening Experience at Te Puia

Included activity: Redwoods Nightlights Fast Pass

Included activity: Kapiti Island Day Tour - Lunch Included

## Day 1



### Private Transfer Auckland Airport to your Auckland Accommodation with Tourcorp

You will be met at the Auckland airport by the driver and transferred to your Auckland accommodation.

## Auckland

Auckland is known in Māori as Tāmaki Makaurau, which translates to "desired by many". The city offers an abundance of activities and hidden gems suited for everyone. For a serene escape, venture to the award-winning wineries scattered across Waiheke; simply hop on a ferry and enjoy a leisurely day in the coastal breeze. Auckland Botanical Gardens, sprawled across 156 acres of lush land and native forest on Hill Road. Experience the great outdoors by visiting iconic landmarks such as One Tree Hill or the renowned ex-volcano, Mt Eden. Alternatively, hop on a quick ferry from the CBD to Devonport and discover this charming seaside suburb. Shopaholics will be delighted to explore Auckland's main shopping district, Newmarket, boasting an array of local boutiques and luxury labels nestled within the Newmarket Westfield Mall. Ponsonby a short drive from the CBD offers New Zealand designers, quaint boutiques, and exceptional dining options. Explore the eclectic mix of bars, thrift shops, and culinary delights along Karangahape Road, affectionately known as "K Road" by locals. Once Auckland's red-light district in the 1960s, it's now recognised as the world's 6th coolest street. Auckland's diverse cultural landscape has inspired an array of tantalising cuisines and dining experiences scattered across the city.&nbsp;

## Auckland Sky Tower Admission

Standing at 328 meters (just over 1000 feet) - the Sky Tower is the tallest man-made structure in New Zealand and offers panoramic views of the Auckland landscape. Travel in the glass-fronted lift to one of three spectacular viewing platforms, or for a little more excitement do a SkyWalk - an outside loop around the pergola 192 meters (just over 600 feet) above ground. If you're really bold, Take the quick way down and SkyJump off the tower - a controlled free fall to the base.

Inside, the Sky Lounge offers coffee and light meals while the iconic Orbit Restaurant is Auckland's only 360-degree revolving dining experience.

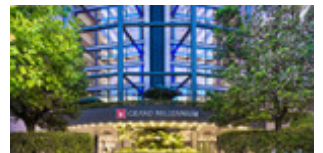
## SUGGESTED ACTIVITY - All Blacks Experience

See what it takes to make, shape and be an All Black. Experience first-hand the excitement and emotion of game day. Discover the stories behind some of world rugby's most famous players, moments, and matches.

This guided experience introduces you to the game of rugby including state-of-the-art displays combining sound, images, interactive technology, and hands-on activities. Discover New Zealand's deep passion for our national sport, experience the full force of the All Blacks haka, and tackle interactive zones where you can try out your kicking, catching, line-out, and accuracy skills against legendary All Blacks.

## Your accommodation: Grand Millennium Auckland

Located in the heart of the city, a stay at Grand Millennium Auckland places you within walking distance of some of the city's finest dining, shopping and entertainment venues.



## Day 2



## Collect Rental Car

Choose a car to best suit your needs from our fantastic rental car range. From compact economy, hatchbacks to prestige SUVs.&nbsp;

## Auckland to Hamilton City

Just 1 hour south of Auckland is Hamilton City, New Zealand's largest inland settlement. Centred on the Mighty Waikato River the city grew from the abandoned Maori Settlement that the Waikato Militia then occupied. The river has provided a very important trade route for many centuries and today still provides power and water. Hamilton Gardens spectacular 58 hectares of displays and collections provide a wonderful sanctuary within the city for its residents and visitors. The Waikato Museum of Art and History boasts an impressive collection of Maori wood carvings, many recovered from local swamps and waterways. The MV Waipa Delta still plies the waters of the Waikato River taking trips along the waterway. This 1877 vessel takes visitors from Memorial Park along the river and its classic bridges and picturesque tree lined banks. A good selection of cafes, restaurants and shopping is available in the town centre.

---

## Entry to the Hamilton Gardens

Hamilton Gardens has one of the finest displays of floriculture in New Zealand. At 58 hectares, its grounds are publicly owned and managed by the Hamilton City Council. Featuring over 21 separate gardens including an Indian, Japanese, Chinese, Italian and English garden, we recommend you take your time to relax and meander through this magnificent property. Originally started in the early 1960's, the Rogers Rose Garden was added in 1971, but most of the expansion and development has occurred since 1982. Today Hamilton Gardens is the most popular visitor attraction in the region with about 600,000 visitors each year, nearly half of them being tourists. The unique theme of Hamilton Gardens is 'the story of gardens' which is explored through a series of five garden collections. Open from 9 am until 5pm (opening time can change) the gardens also display a series of season features. A café and restaurant are also on site.

---

## Hamilton to Waitomo

The lush farmland of the Waikato and the limestone hills of the Waitomo region provide unmissable scenery as you head south. Arrive in Waitomo, home to a huge network of glow worm caves - a must do if you are in the area.

---

## Waitomo

Waitomo is a small, picturesque village located in the Waikato region of New Zealand's North Island, renowned globally for its spectacular underground limestone caves and the mesmerising glowworms that illuminate them. This natural wonderland attracts visitors from around the world, offering a unique blend of adventure, natural beauty, and Maori culture. The Waitomo Caves are the centerpiece of the area, with three main caves that are open to the public: the Waitomo Glowworm Caves, Ruakuri Cave, and Aranui Cave. The Glowworm Caves are perhaps the most famous, offering a magical boat ride through a subterranean grotto lit by thousands of tiny glowworms, creating a starry night effect underground. Ruakuri Cave offers a more adventurous experience, with its spiral entrance, underground rivers, and fascinating rock formations, while Aranui Cave is known for its stunning stalactites and stalagmites. For thrill-seekers, Waitomo offers a variety of exhilarating activities, including black-water rafting, where you can float through the caves on an inner tube, and abseiling or zip-lining into the depths of the caves. The surrounding karst landscape also provides opportunities for above-ground exploration, with scenic walking trails that reveal the region's lush forests, limestone cliffs, and hidden waterfalls. Waitomo's connection to Māori culture adds another layer of depth to the visitor experience. Many of the cave tours include insights into the Māori legends and stories associated with the area, offering a deeper understanding of the cultural significance of the caves. The village of Waitomo itself is small but welcoming, with a selection of cafes, restaurants, and accommodations ranging from backpacker hostels to luxury lodges. The nearby Otorohanga Kiwi House & Native Bird Park offers a chance to see New Zealand's native wildlife, including the iconic kiwi bird, further enriching your visit to the region.

---

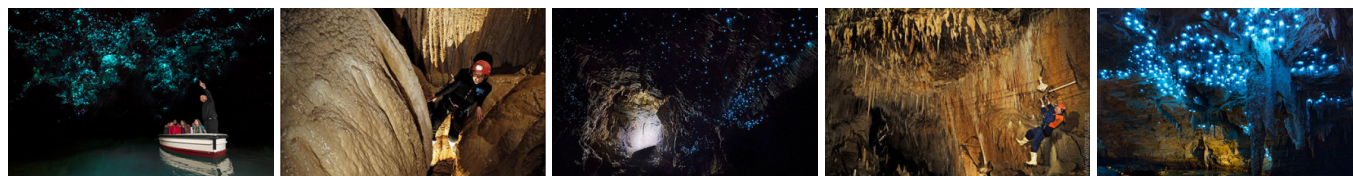
## Your accommodation: Waitomo Caves Guest Lodge - DO NOT USE

The guest lodge is situated right in the heart of Waitomo Caves Village, in a peaceful garden setting, with beautiful views over the surrounding countryside. Opposite the award-winning Huhu cafe and just a couple of minutes walk from the Waitomo i-SITE Visitor and Discovery Centre.



---

## Day 3



## Glow Worm Caves Tour with Discover Waitomo

Explore a 30 million year old cave network spread across three levels. You'll travel deep underground through the limestone caves viewing stalactites and stalagmites as well as hearing about the caves historical and geological significance. You'll then hop into a boat and glide silently through the glow worm grotto - a galaxy of tiny living lights.

---



## Your accommodation: Waitomo Caves Guest Lodge - DO NOT USE

The guest lodge is situated right in the heart of Waitomo Caves Village, in a peaceful garden setting, with beautiful views over the surrounding countryside. Opposite the award-winning Huhu cafe and just a couple of minutes walk from the Waitomo i-SITE Visitor and Discovery Centre.

Meals included: Breakfast



---

## Day 4



### Waitomo to Rotorua

Today cross the lush farmland of the Waikato as you make your way inland to Rotorua. Pass through several small farming towns such as Otorohanga and Putaruru, before the region's geothermal activity signals your arrival into the city of Rotorua.

---

## Rotorua

Discover the geothermal, adventure, and cultural wonderland of Rotorua. As you explore, you may see steam rising from cracks in the road, bubbling and hissing water in pools along the lake's edge, and the unmistakable smell of Sulfur. Rotorua is rich in Māori culture and history, with many Māori inhabitants recognising the great potential of the volcanic land. For an outdoor adventure, head to The Redwoods and experience the rainforest treetops from high up. There are a few accessible trails for disabled hikers and great biking trails as well. If you're lucky, you might spot some of New Zealand's native birds, such as the Piwakawaka (Fantail) and the Tūī. Alternatively, enjoy the Lake Tikitapu Blue Lake Walk or explore Kuirau Park, where you'll find bubbling mud pools and steaming lakes. Don't miss the private thermal reserves such as Te Puia and Wai-O-Tapu, where you can walk among bubbling mud pools, spouting geysers, and Sulfur ponds. Just a few minutes from the town centre, the Agrodome and National Kiwi Hatchery offer an insight into nature. Rotorua's rich Māori culture is a must-see. Spend an evening with Te Pā Tū, complete with a traditional-style dinner or stroll along the lake edge to reach one of the country's oldest Māori villages at Ohinemutu. When hunger strikes, visit Eat Street in Rotorua CBD, a vibrant street lined with delicious eateries and restaurants to satisfy any craving. No visit to Rotorua would be complete without experiencing Rotorua's original tourist attraction - a relaxing spa treatment. This town boasts an array of wellness experiences to unwind in. Whether you are seeking adventure, culture, or relaxation, Rotorua offers an unforgettable experience.

---

## Te Pō - Indigenous Evening Experience

Indulge in Te Puia's world-famous hāngī buffet dinner, served in the inviting atmosphere of Pātaka Kai Restaurant, Bar & Café. The menu, crafted with the freshest ingredients, offers a delightful array of traditional Māori cuisine. This banquet combines contemporary cuisine with a traditional hāngī (earth-cooked oven meal). The evening's cultural performance will take place in an exquisitely carved meeting house, Te Aronui a Rua. Here, you'll experience a rich showcase of Māori traditions, beginning with a pōhiri (traditional welcome), followed by the melodious harmonies of waiata (song), the powerful rhythms of mōteatea (traditional chant), the graceful artistry of poi, and the intense energy of the haka. As the night draws to a close, savor hot chocolate heated in geothermal water and steamed pudding while basking in the enchanting ambiance of the geyser terrace. Bathed in colored light and surrounded by the mystical steam rising from the earth, this unforgettable evening at Te Puia is a feast for the senses and a celebration of Māori culture.

---

## Your accommodation: Sudima Lake Rotorua

Sudima Hotel Lake Rotorua boasts a location that is second-to-none, right on the shores of beautiful Lake Rotorua. Adjacent to the world-famous Polynesian Spa complex and just a short stroll to all the attractions in Rotorua.

Meals included: Breakfast, Speciality Dinner



---

## Day 5



## Wai-O-Tapu Thermal Wonderland

Wai-O-Tapu Thermal Wonderland is a spectacular showcase of New Zealand's colourful and unique geothermal elements sculpted by thousands of years of volcanic activity. You will be introduced to a diversely different natural landscape, extending over 18-sq. km. Enjoy viewing the volcanic features as you walk at your own pace along well-defined tracks. Relax in the first-class Visitor Centre, home to the Gift Shop and Caf'eacute; facilities. Visit the Mud Pool, the largest in New Zealand, it was originally the site of a large mud volcano which was destroyed through erosion in the 1920s. See the history and beauty of the Lady Knox Geyser at 10:15 am every day where a daily eruption happens of up to 20 metres.&nbsp;

---

## Redwoods Nightlights Fast Pass

Redwoods Nightlights is one of New Zealand's top design-led tourism experiences that features 30 exquisite lanterns designed by world-renowned designer and sustainability champion David Trubridge. Floating between 9-20 metres above the forest floor, this eco-tourism walk is 700 metres long, spans across 28 suspension bridges and 27 platforms, and takes about 40 minutes to complete. With the fast pass, you will be able to skip lines and get straight into the fun!

---

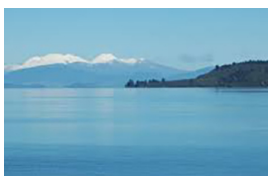
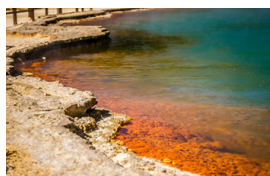
## Your accommodation: Sudima Lake Rotorua

Sudima Hotel Lake Rotorua boasts a location that is second-to-none, right on the shores of beautiful Lake Rotorua. Adjacent to the world-famous Polynesian Spa complex and just a short stroll to all the attractions in Rotorua.



---

## Day 6



## Rotorua to Whakapapa Village

Today you'll drive from Rotorua to Tongariro National Park along the thermal highway. Pass through Taupo and be sure to check out the Wai O Tapu Thermal Wonderland or Waimangu Volcanic Valley both well worth a visit if you can spare the time. Visit the Huka Falls, New Zealand's largest volume of water or take in the boiling mud pools and steam vents as you wander the nearby geothermal reserve, Craters of the Moon. Continue on to the township of Turangi, known as one of the world's best trout fishing locations before emerging out into Tongariro National Park.

---

## Walking tracks in and around Whakapapa Village, Tongariro National Park

There are a plethora of walks in and around Whakapapa Village and Tongariro National Park. From short 15 minute hikes to longer 5 hour treks, there is something for every level of fitness. All established tracks are maintained by the Department of Conservation and before heading out on a walk, it is best to check the track conditions and suitability at the local DOC information office in the centre of the village. Below are a selection of the best walks to do: Whakapapa Nature Walk, 15 min loop track Mounds Walk, 20 min one way Tawhai Falls, 20 min one way Ridge Track, 40 min return Taranaki Falls, 2 hour return Whakapapanui Walk, 2 hour return Tupapakuraa Falls Track, 5 hour return

---

## Sky Waka Gondola Sightseeing Trip with Whakapapa - Open Dated Voucher

During the summer months you can take advantage of the skifield facilities and take the gondola over Mt Ruapehu's otherworldly terrain.&nbsp; You'll travel to an altitude of 2020 metres where you'll be treated to magnificent views of Tongariro National Park, including the iconic peaks of Mt Ruapehu, Mt Tongariro and Mt Ngauruhoe, the latter featured as Mt Doom in the Lord of the Rings movies.

---

## Your accommodation: Skotel Alpine Resort

Located in the tussock on the edge of the Whakapapa Village in the heart of the Tongariro National Park The Skotel Alpine Resort offers a wonderful atmosphere and well equipped rooms to relax and enjoy the region from.



## Day 7



### Waimarino-National Park to Paraparaumu

Leaving Waimarino, you'll pass through the military town of Waiouru, home to the Army Museum—an impressive tribute to New Zealand's military history and its servicemen. Continuing south, the road winds through the rural towns of Taihape, Mangaweka, and Bulls, each with its own small-town charm. As you near the Kapiti Coast, the landscape shifts, and the crisp sea air hints at the coastline ahead. Finally, golden beaches and a relaxed coastal vibe welcome you to Paraparaumu, marking the perfect end to your journey.

### Explore Paraparaumu

As the main town on the Kapiti Coast, Paraparaumu has plenty of everything for travellers. The shopping centre has more than 50 stores, as well as banks, supermarkets and cinemas. North of the town is a farm park where you'll find farm shows and gourmet food producers (cheese, olives, honey, ice cream and other treats) while Paraparaumu Beach is the launching spot for trips to Kapiti Island, a nature reserve hosting some of New Zealand's most endangered birds. Experience scenic flights and glider rides and if you love old vehicles, the local car museum has one of the largest collections in Australasia.

### Your accommodation: Aston Road Villa Bed and Breakfast

Aston Road Villa offers a contemporary and spacious two bedroom guest wing. The Villa can be used for a relaxing weekend, or as a base for exploring the Kapiti coast. Aston Road Villa offers you a "home away from home" experience.



## Day 8



### Kapiti Island Day Tour - Lunch Included

Your day trip to Kapiti Island begins at Paraparaumu where you'll catch the short ferry ride over to Waiohau Bay at the northern end of Kapiti Island. On arrival you'll be welcomed to the island and your experienced nature guide will introduce you to the natural and human history of the island. You'll discover for yourself the remarkable bird life that exists on this predator free island when you're guided on a 1 hour nature walk. A delicious cooked lunch is also provided at the lodge on the island.

### Paraparaumu to Wellington

Continue south along Kapiti Coast. The coastal seaside towns of Paekakariki and Plimmerton are also worth a short detour before arriving into the capital city of Wellington. Wellington City is New Zealand's capital. It sits on a wonderful deep natural harbour and is surrounded by bush clad hills. The city centre itself is quite compact (only around 1 square kilometre) and so exploring on foot is relatively easy. From your city centre accommodation you can easily stroll the cafes and restaurants around Courtenay Place or visit New Zealand's national museum, Te Papa, which is also close by.

### Wellington

Wellington known in Māori as Te Upoko o Te Ika a Maui is home to New Zealand's centre of government. Often referred to as 'mini Melbourne', this windy city is a melting pot of art, culture, food, and fashion. Quirky laneway bars, underground art shows, and hipster eateries make up its inner-city vibe, while a host of sandy beaches outside the urban bustle bring a cheerful holiday feel. Head to Te Papa Museum for a history lesson and a ticket to one of its many international exhibitions or jump aboard the Wellington Cable Car - the only running funicular railway in the country. For those with an eye for boutique, fashion wander through Cuba St to sample some of the city's best vintage stores. Break for coffee at a hipster cafe and be sure to snap a pic outside the 'Beehive', New Zealand's parliamentary debate chamber. Go behind the scenes at Weta Workshop Experience, the Oscar Award Winning design studio behind Lord Of The Rings, The Hobbit, and Avatar. If you're a foodie at heart, a two-hour round trip to Martinborough is a must-do. Take your time as you wind through spectacular wine country. For an educational day out, learn about New Zealand's native species at Zealandia, the world's first fully-fenced eco-sanctuary and home to over 40 types of endangered and native birds.



## Your accommodation: Hotel Ibis Wellington

Hotel Ibis Wellington is ideally located in Featherston Street in the heart of Wellington City and easy walking distance to Wellington's famous cafe lifestyle.

Meals included: Breakfast, Lunch



---

## Day 9



### Explore Wellington

Wellington, known in Māori as Te Upoko o te Ika a Maui ("The Head of the Fish of Maui") or Te Whanganui a Tara ("The Great Harbour of Tara"), is New Zealand's vibrant capital. Often called a 'mini-Melbourne', this cosmopolitan city blends art, culture, food, and fashion with quirky laneway bars, hip eateries, and underground art shows. Stroll the waterfront to Te Papa, New Zealand's national museum, or ride the historic cable car from Lambton Quay for stunning city views. Explore Cuba Street's unique boutiques and visit the iconic 'Beehive' at Parliament. Fans of The Lord of the Rings can tour Weta Workshop, the Oscar-winning design studio behind Middle-earth. Just an hour away, Martinborough offers a culinary escape with top-notch food and wine. Nature lovers can't miss Zealandia, the world's first fully fenced eco-sanctuary. End your day sampling Wellington's renowned dining scene—search 'Metro Eats' for the city's best spots.

---

### SUGGESTED ACTIVITY - Guided Tour of Te Papa The Museum of New Zealand

Beginning over one hundred million years ago, join your guide on a journey through New Zealand's rich history and cultures. Hear stories of our adaptive wildlife, the resilience of the Māori people, and artistic interpretations of life in the South Pacific.

Whether you have limited time or here for an extended visit, this tour will give you a great opportunity to understand the vibrant landscapes and cultures you will encounter throughout Aotearoa New Zealand.

---

### SUGGESTED ACTIVITY - Wētā Workshop Experience

The Weta Cave mini-museum brings you face-to-face with some of the characters, props, and displays from your favorite movies, including The Hobbit and Lord of the Rings movies. Visit Weta Cave Workshop and get up close to the props, weapons, and costumes created for The Lord of the Rings, Power Rangers, The Great Wall, Avatar, District 9, and more. See artists at work on the tour stage and peek through windows that look directly into the Workshop. Hear stories from the Weta Workshop crew. Many have worked on the films themselves!

Weta Workshop is also known for its extraordinary miniatures and bigatures created for films like The Lord of the Rings, Furious 7, The Legend of Zorro, and Master and Commander. On the Miniatures Stage Tour, you'll visit the authentic Thunderbirds Are Go shooting stage and discover Weta Workshop's latest jaw-dropping creations.

---

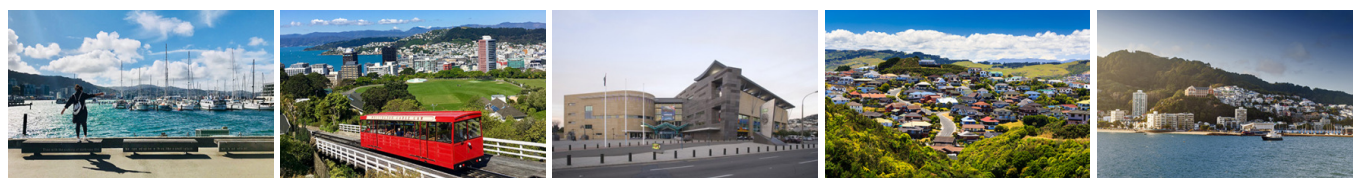
## Your accommodation: Hotel Ibis Wellington

Hotel Ibis Wellington is ideally located in Featherston Street in the heart of Wellington City and easy walking distance to Wellington's famous cafe lifestyle.



---

## Day 10



### Depart Wellington today

Choose to explore more of Wellington's sights before dropping your rental car at the airport depot and continuing your onward journey.

## Farewell from Aotearoa-New Zealand

Bid farewell to New Zealand, taking with you unforgettable memories of its breathtaking landscapes and incredible adventures. In Maori, it is said mā te wā, which is not goodbye, it is see you soon!

---



## Tour details

Departures:	Daily
Tour type:	North Island Self Drive
Starts:	Auckland
Finishes:	Wellington
Tour length:	10
Accommodation:	Hotel 3 star
Car/transport type:	

---

## Included activities

Includes	Private airport transfers
Includes	Hobbiton Movie Set from Rotorua
Includes	Mitai Maori Village Concert & Buffet Dinner, Rotorua
Includes	Waitomo Glow Worm and Aranui Caves
Includes	Huka Falls Jet Boat Tour

---

## Accommodation summary

Day 1	Grand Millennium Auckland
Day 2	Waitomo Caves Guest Lodge - DO NOT USE
Day 3	Waitomo Caves Guest Lodge - DO NOT USE
Day 4	Sudima Lake Rotorua
Day 5	Sudima Lake Rotorua
Day 6	Skotel Alpine Resort
Day 7	Aston Road Villa Bed and Breakfast
Day 8	Hotel Ibis Wellington
Day 9	Hotel Ibis Wellington